



WE SIMPLY SOUND BETTER.

Reference 30

SERVICE MANUAL

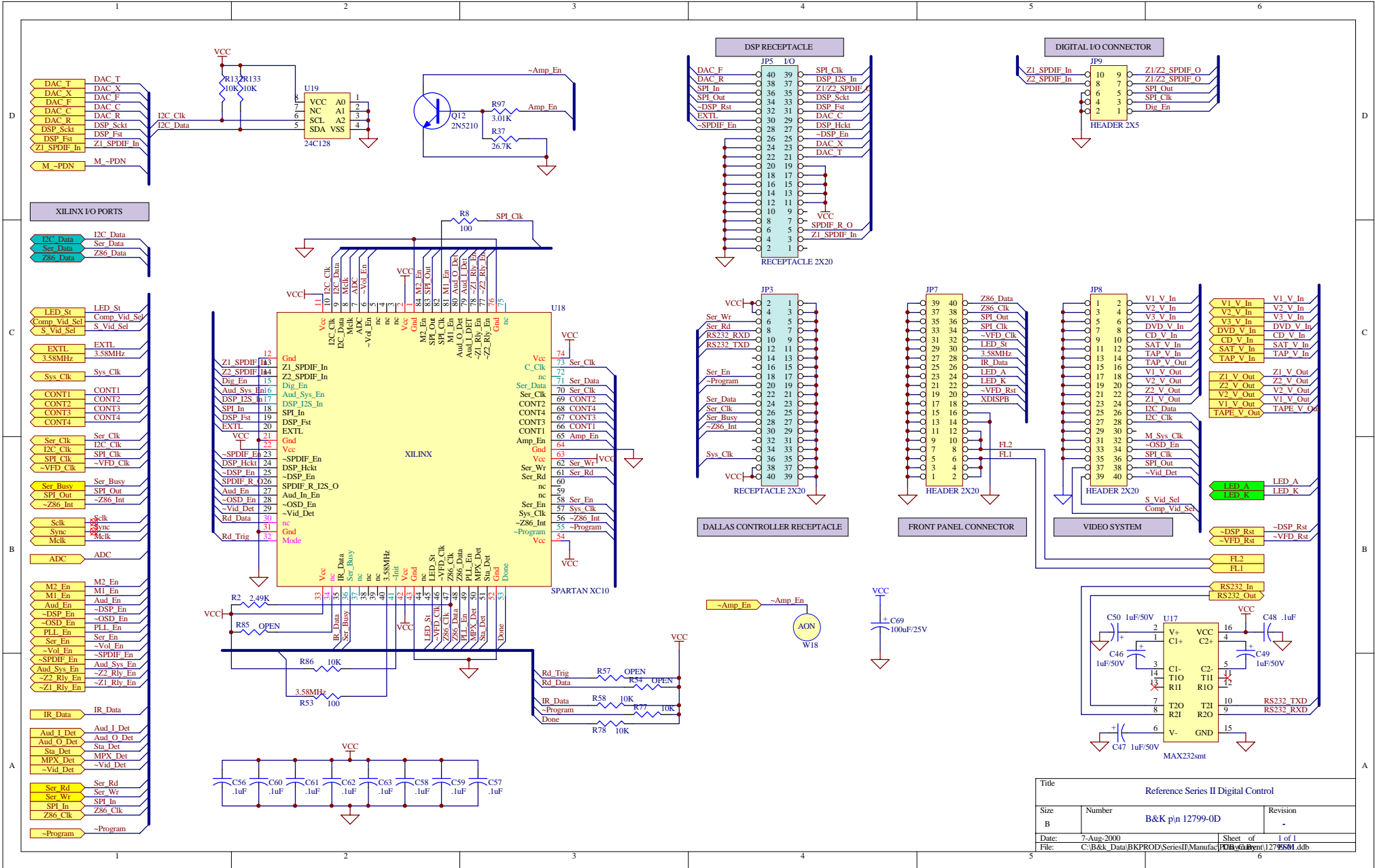
B&K COMPONENTS, LTD.
2100 Old Union Road
Buffalo, New York 14227-2725
U.S.A.

B & K

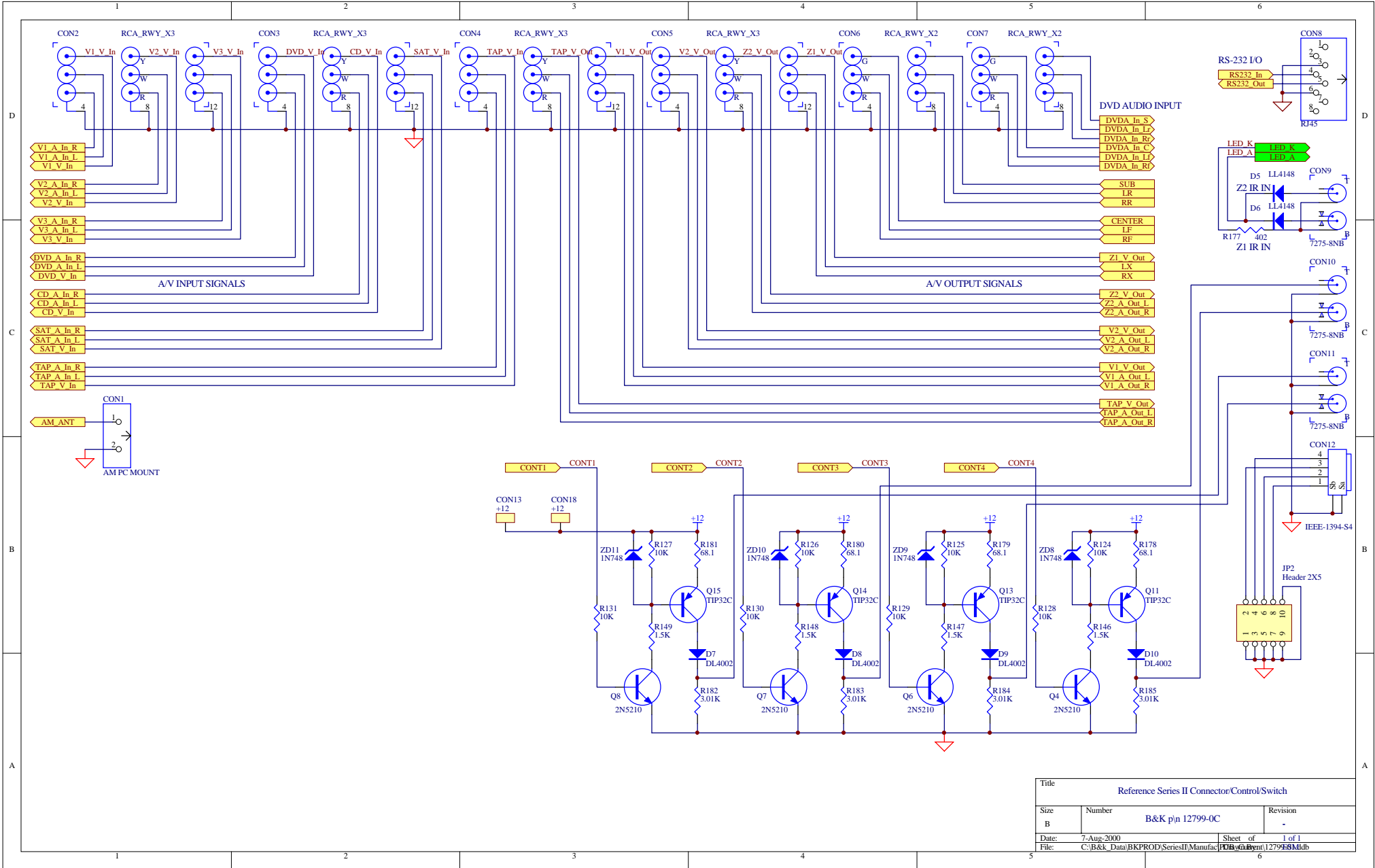
WE SIMPLY SOUND BETTER.

Schematics

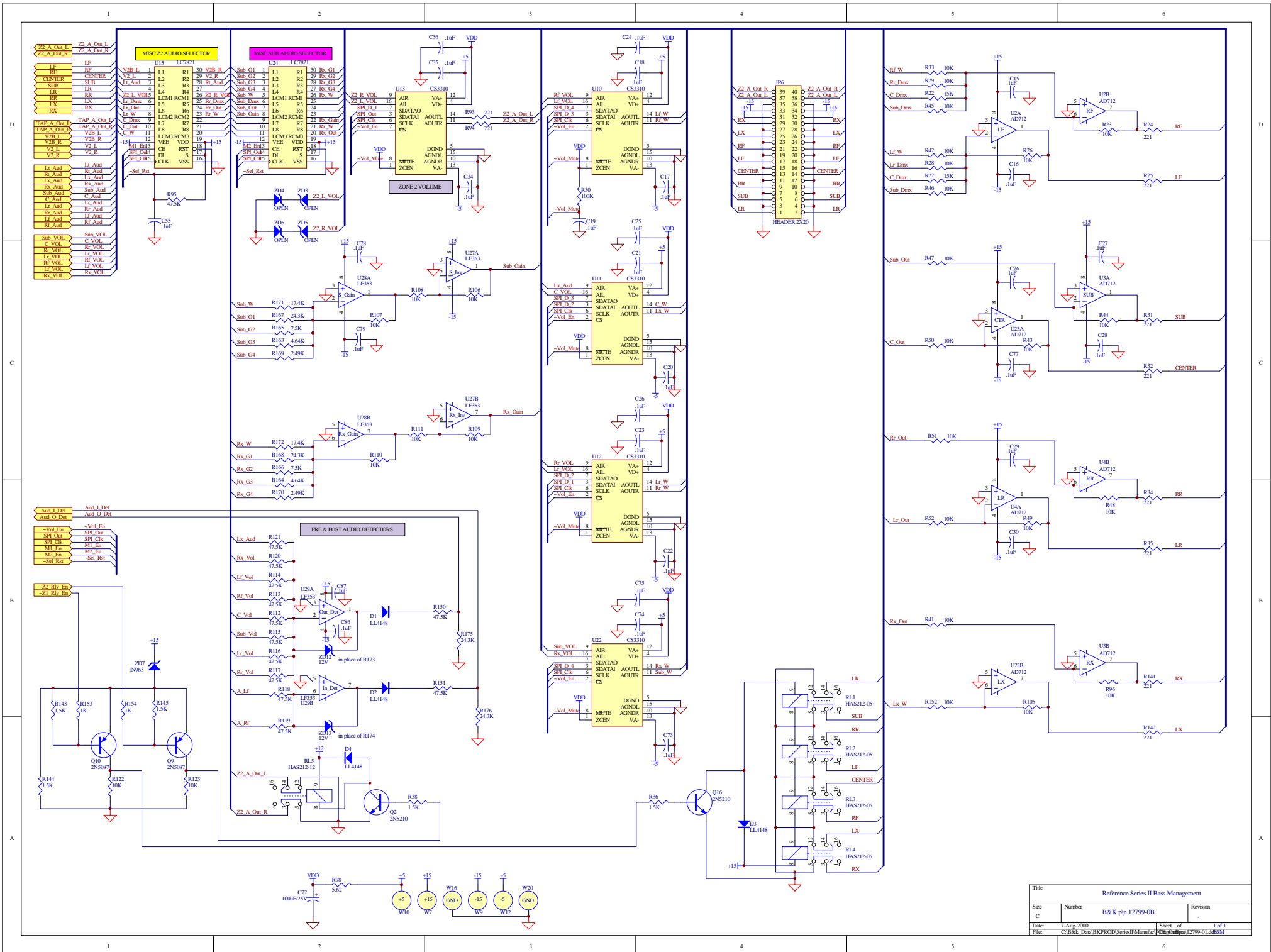
B&K COMPONENTS, LTD.
2100 Old Union Road
Buffalo, New York 14227-2725
U.S.A.



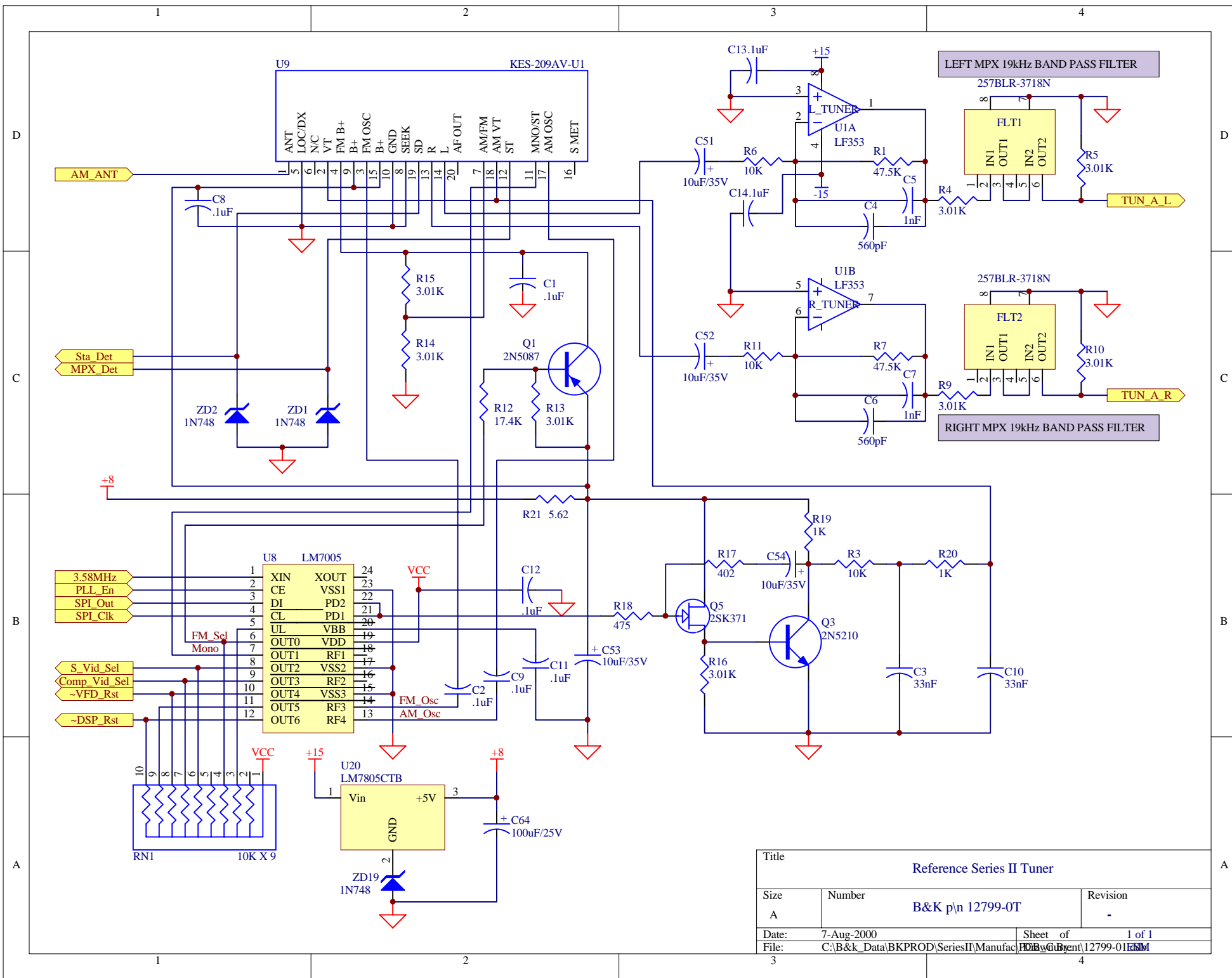
Title			Reference Series II Digital Control		
Size	Number	B&K p/n 12799-0D		Revision	
B				-	
Date:	7-Aug-2000	Sheet of		1 of 1	
File:	C:\B&K_Data\BKPROD\SeriesII\Manufact\PCB\ref12799-0D.ddb	Drawn by		12799SM	



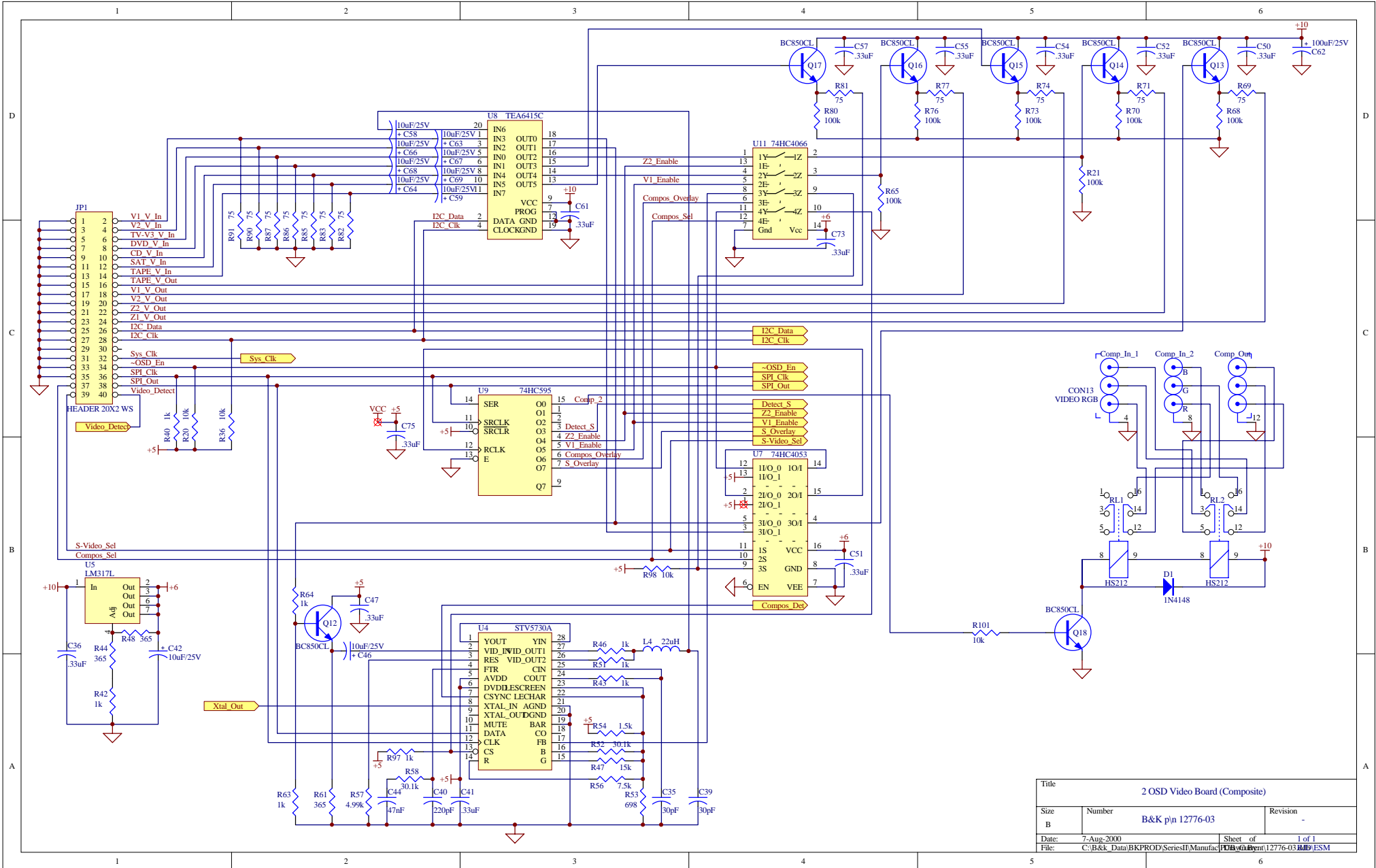
Title			
Reference Series II Connector/Control/Switch			
Size	Number	B&K p/n 12799-0C	Revision
B			-
Date:	7-Aug-2000	Sheet of	1 of 1
File:	C:\B&K_Data\BKPROD\SeriesII\Manufact\PCB\cbp12799-0C.dtb	PCB	12799-0C.dtb



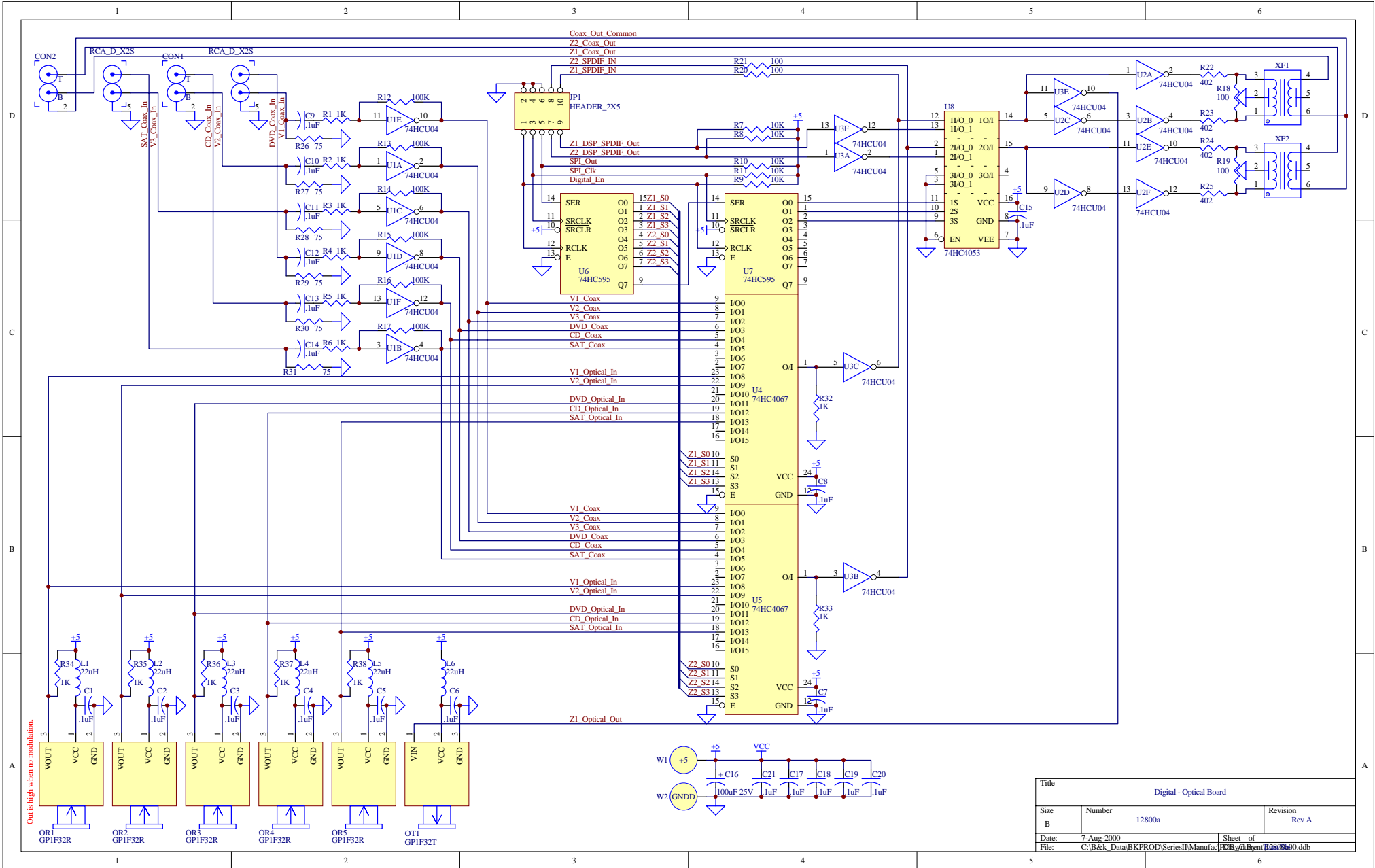
Reference Series II Bass Management			
Size	Number	B&K P/n	Revision
C		B&K P/n 12799-0B	-
Date:	7 Aug 2000	Sheet 01	1 of 1
File:	C:\B&K_13m\BKP\PROJ\SeriesII\Manufact\B&K\B&K12799-01.DBSM		



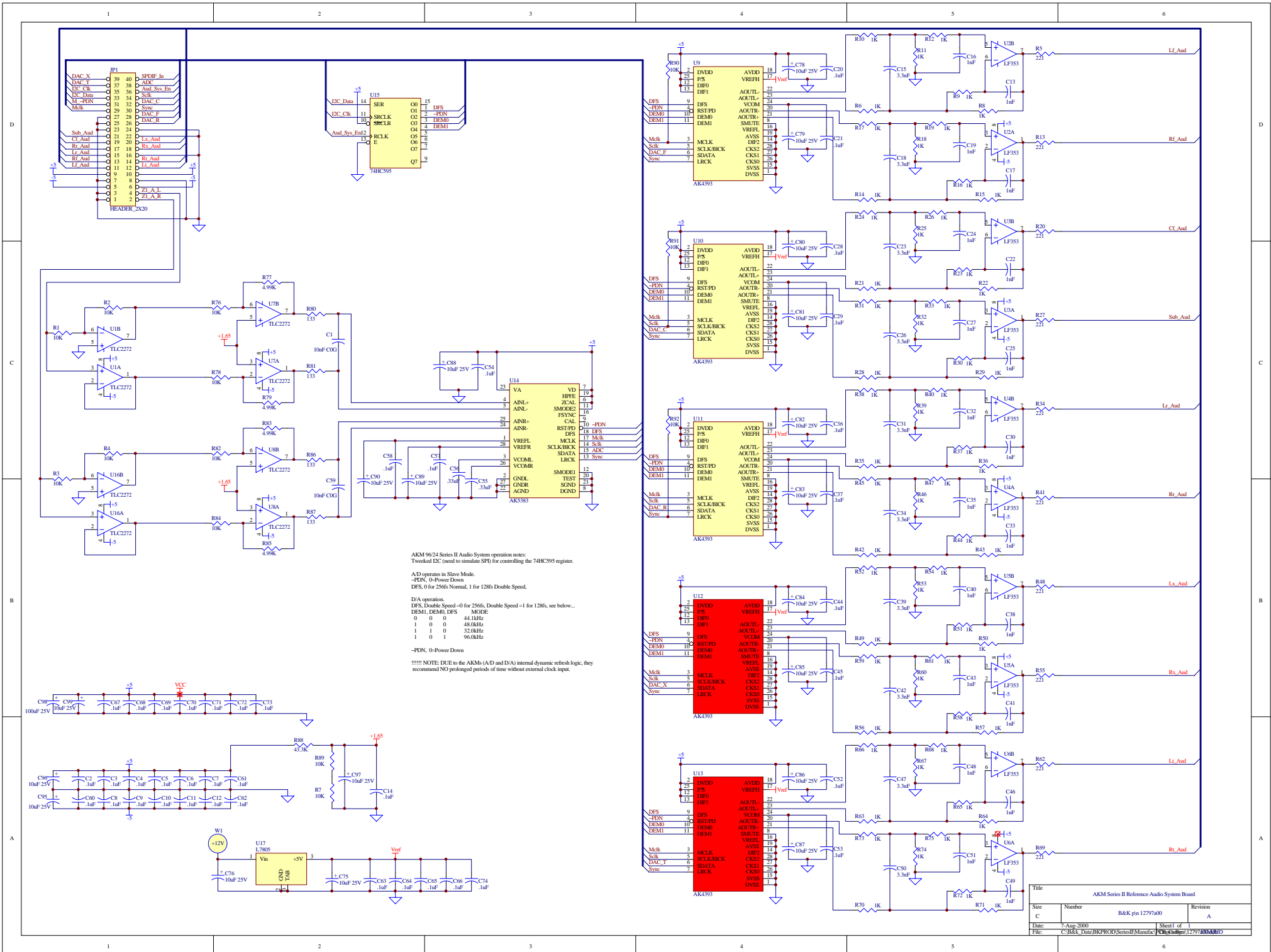
Title			Reference Series II Tuner
Size	Number	B&K p/n 12799-0T	
A		Revision -	
Date:	7-Aug-2000	Sheet of	1 of 1
File:	C:\B&k_Data\BKPROD\SeriesII\Manufact\12799-01.tbl		



Title			2 OSD Video Board (Composite)			
Size	Number	B&K p/n 12776-03			Revision	-
B						
Date:	7-Aug-2000	Sheet of	1 of 1			
File:	C:\B&K_Data\BKPROD\SeriesI\Manufact\PCB\cpl\12776-03\B9_ESM					



Title		
Digital - Optical Board		
Size	Number	Revision
B	12800a	Rev A
Date:	7-Aug-2000	Sheet of
File:	C:\B&K_Data\BKPROD\SeriesI\Manufact\PCB\G1Bent\13800000.ddb	



AKM 9624 Series II Audio System operation notes:
 Tweaked I2C, need to simulate SPI for controlling the 74HC595 register.

A/D operation in Slave Mode:
 -PDN, 0=Power Down
 DFS, 0 for 256fs Normal, 1 for 128fs Double Speed.

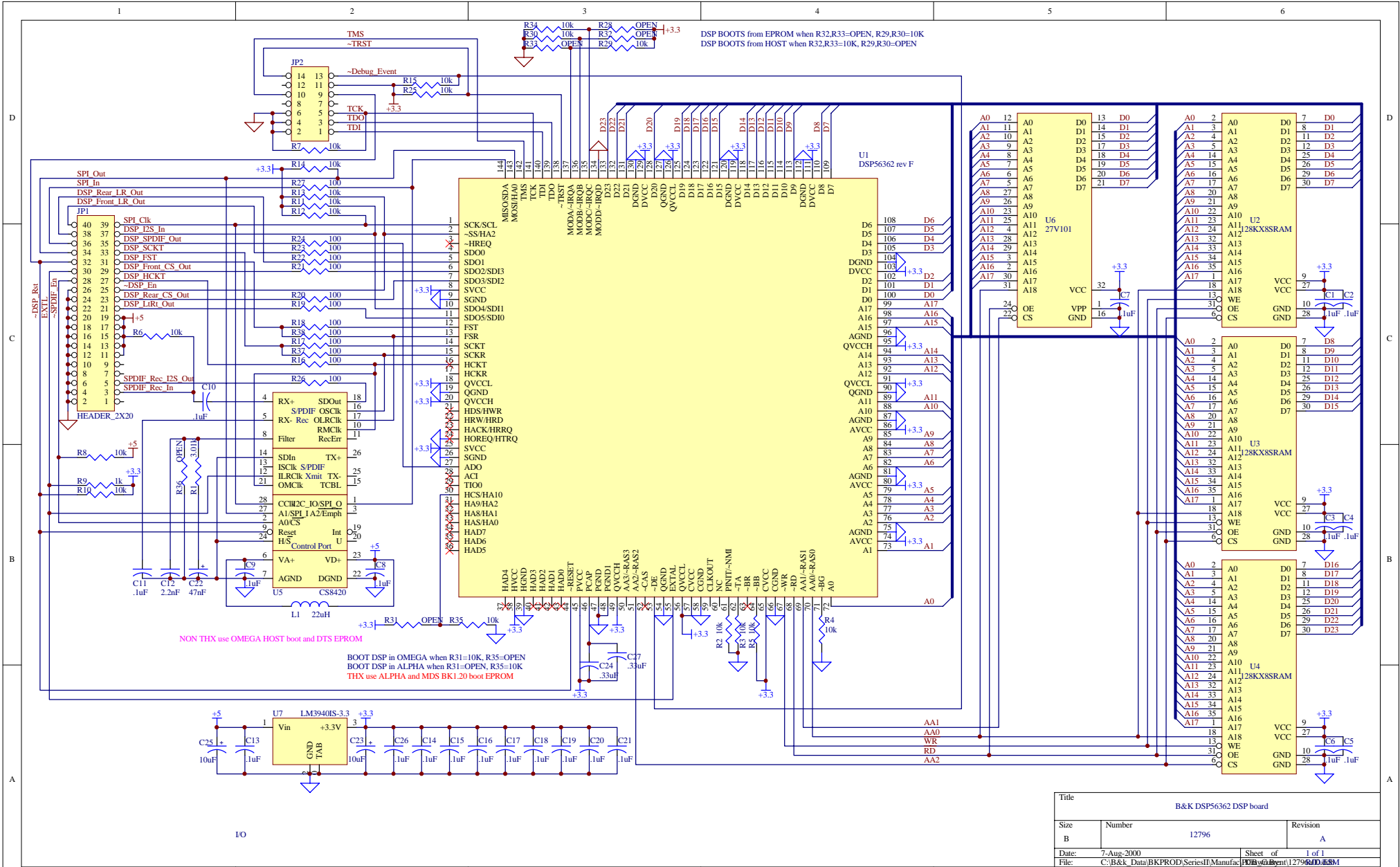
D/A operation:
 DFS, Double Speed=0 for 256fs, Double Speed=1 for 128fs, see below...
 DEM1, DEM0, DFS MODE:

0	0	0	44.1kHz
1	0	0	48.0kHz
1	1	0	32.0kHz
1	0	1	96.0kHz

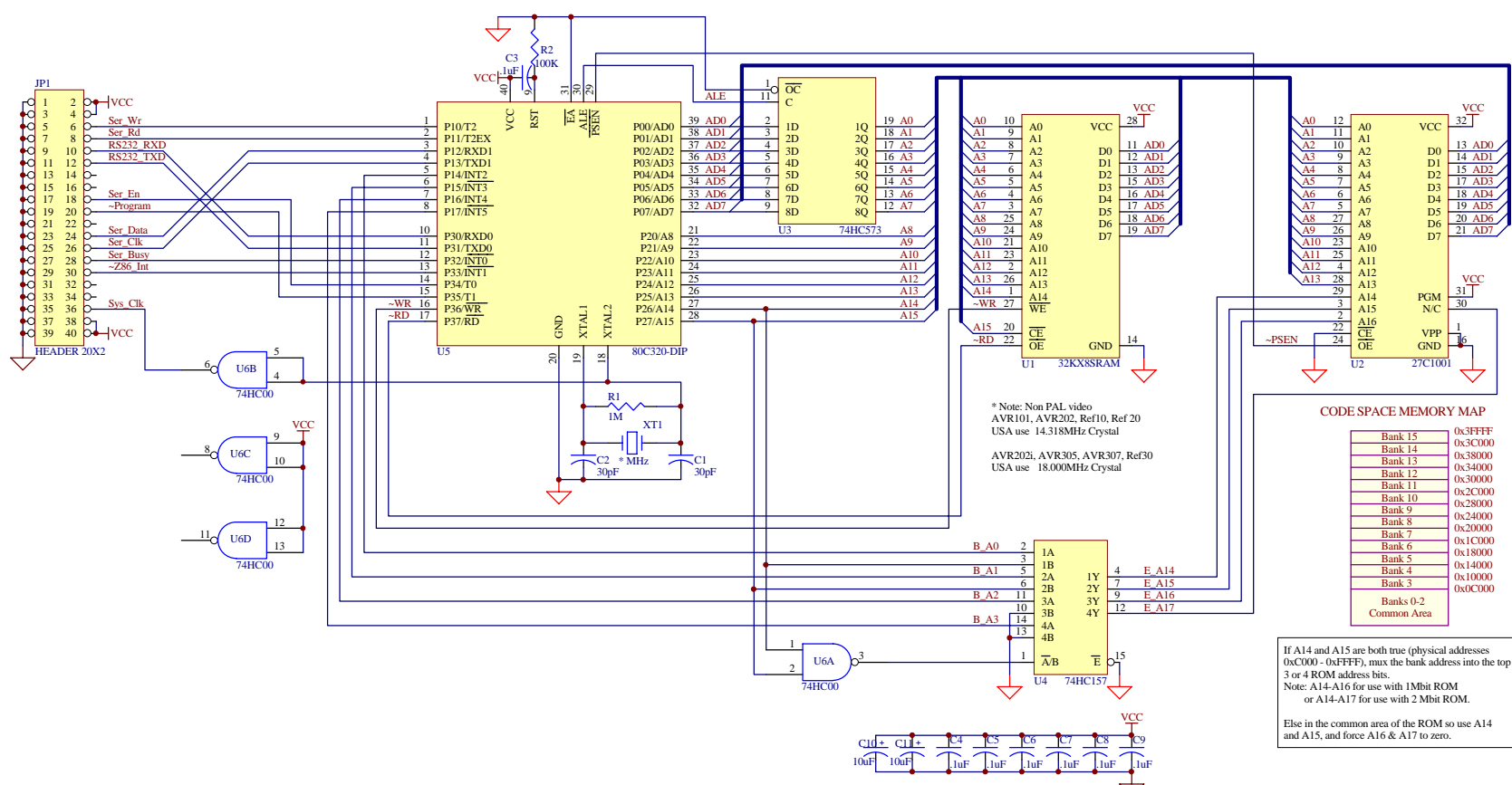
 -PDN, 0=Power Down

!!!! NOTE: D/A in the AKMs (A/D and D/A) internal dynamic refresh logic, they recommend NO prolonged periods of time without external clock input.

Title			
AKM Series II Reference Audio System Board			
Size	Number	B&K pin 12797aD	Revision
C			A
Date:	7/Aug/2000	Sheet 1 of	
File:	C:\B&K_15m\BKP\PROJ\SeriesII\Main\Ref\AKMRef12797aD.D	Sheet 1 of	



Title		
B&K DSP56362 DSP board		
Size	Number	Revision
B	12796	A
Date:	7-Aug-2000	Sheet of 1 of 1
File:	C:\B&K_Data\BKPROD\SeriesI\Manufact\PCB\B&K\Bent\12796\DD_IBM	

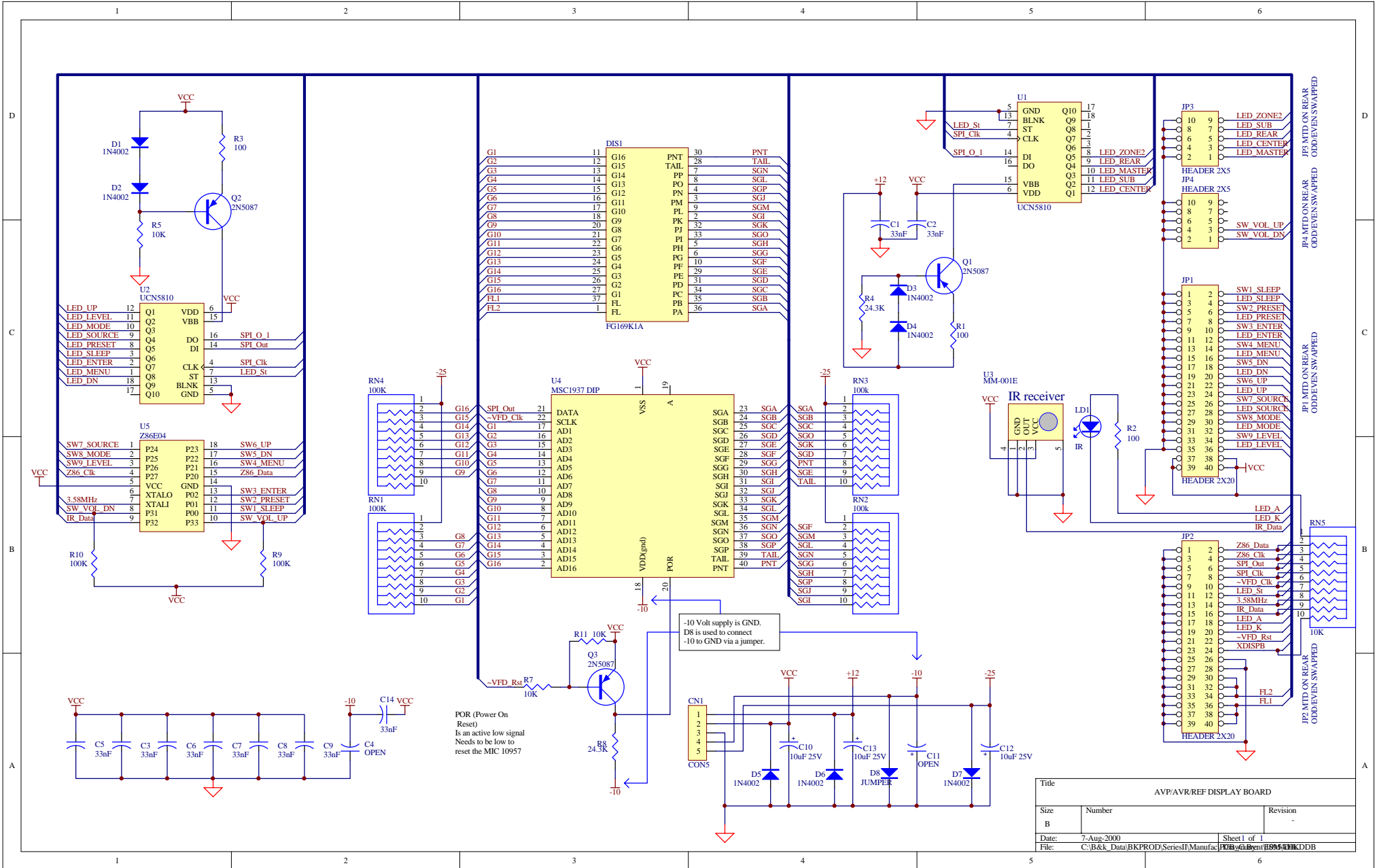


* Note: Non PAL video
 AVR101, AVR202, Ref10, Ref20
 USA use 14.318MHz Crystal
 AVR202i, AVR305, AVR307, Ref30
 USA use 18.000MHz Crystal

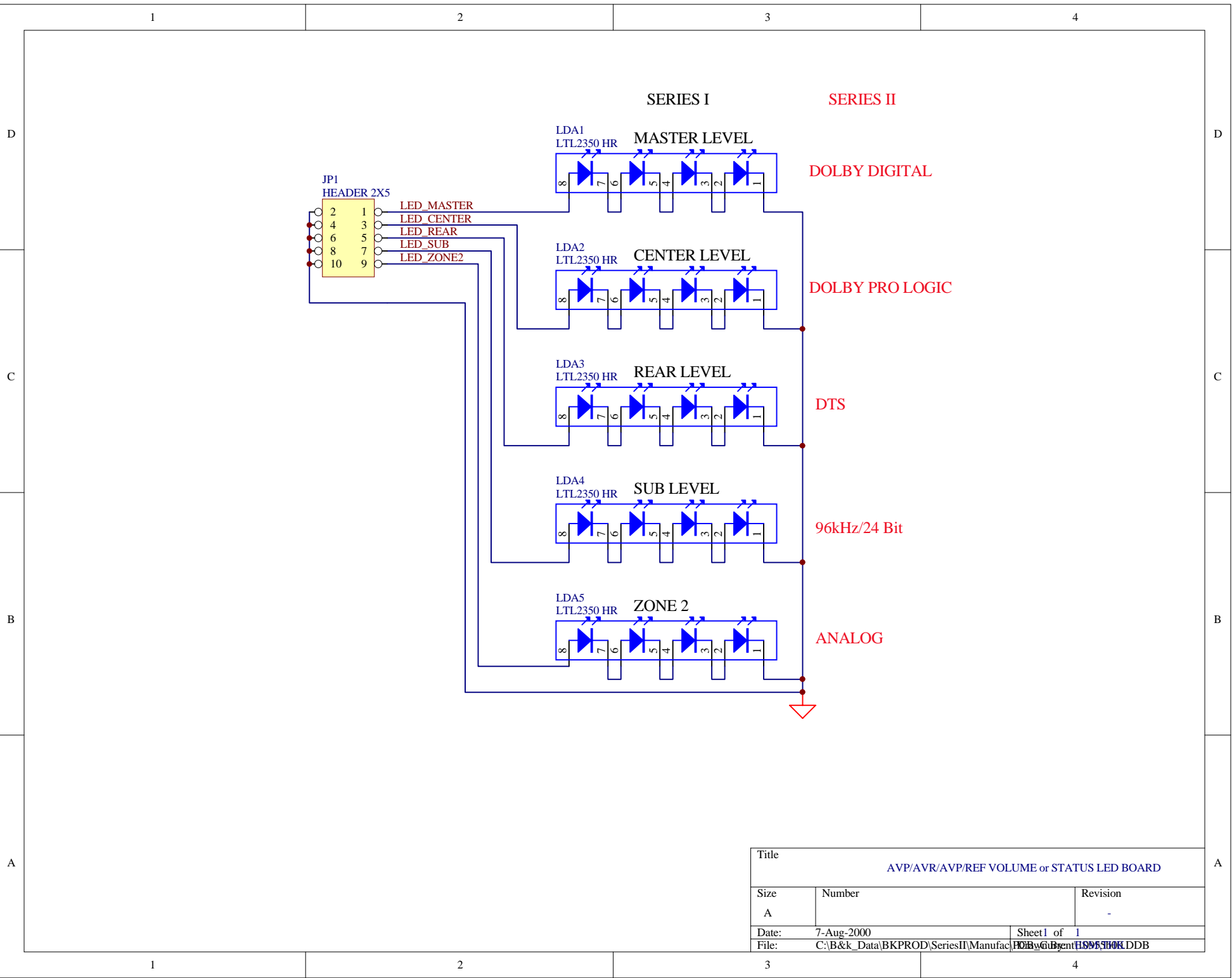
CODE SPACE MEMORY MAP

Bank 15	0x3FFFF
Bank 14	0x3C000
Bank 13	0x38000
Bank 12	0x34000
Bank 11	0x30000
Bank 10	0x2C000
Bank 9	0x28000
Bank 8	0x24000
Bank 7	0x20000
Bank 6	0x1C000
Bank 5	0x18000
Bank 4	0x14000
Bank 3	0x10000
Bank 2	0x0C000
Common Area	

If A14 and A15 are both true (physical addresses 0xC000 - 0xFFFF), mux the bank address into the top 3 or 4 ROM address bits.
 Note: A14-A16 for use with 1Mbit ROM or A14-A17 for use with 2 Mbit ROM.
 Else in the common area of the ROM so use A14 and A15, and force A16 & A17 to zero.



Title		
AVP/AVR/REF DISPLAY BOARD		
Size	Number	Revision
B		
Date:	7-Aug-2000	Sheet 1 of 1
File:	C:\B&K_Data\BKPROD\SeriesI\Manufact\PCB\6161\BSP6161K.DDB	



Title		
AVP/AVR/AVP/REF VOLUME or STATUS LED BOARD		
Size	Number	Revision
A		-
Date:	7-Aug-2000	Sheet 1 of 1
File:	C:\B&k_Data\BKPROD\SeriesI\Manufact\1095301.DDB	

1

2

3

4

D

D

C

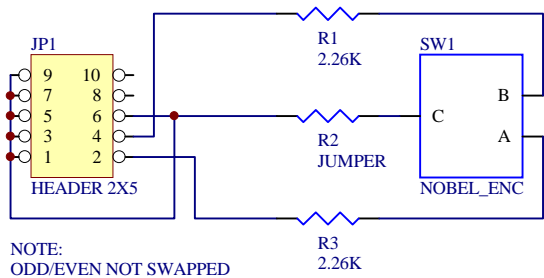
C

B

B

A

A



NOTE:
 ODD/EVEN NOT SWAPPED
 JP1 MTD ON TOP

Title		
AVP/AVR/REF/TP ROTARY ENCODER BOARD		
Size	Number	Revision
A		A
Date:	7-Aug-2000	Sheet 1 of 1
File:	C:\B&k_Data\BKPROD\SeriesII\Manufact\PCB\Brent\12760a00.DDB	

1

2

3

4