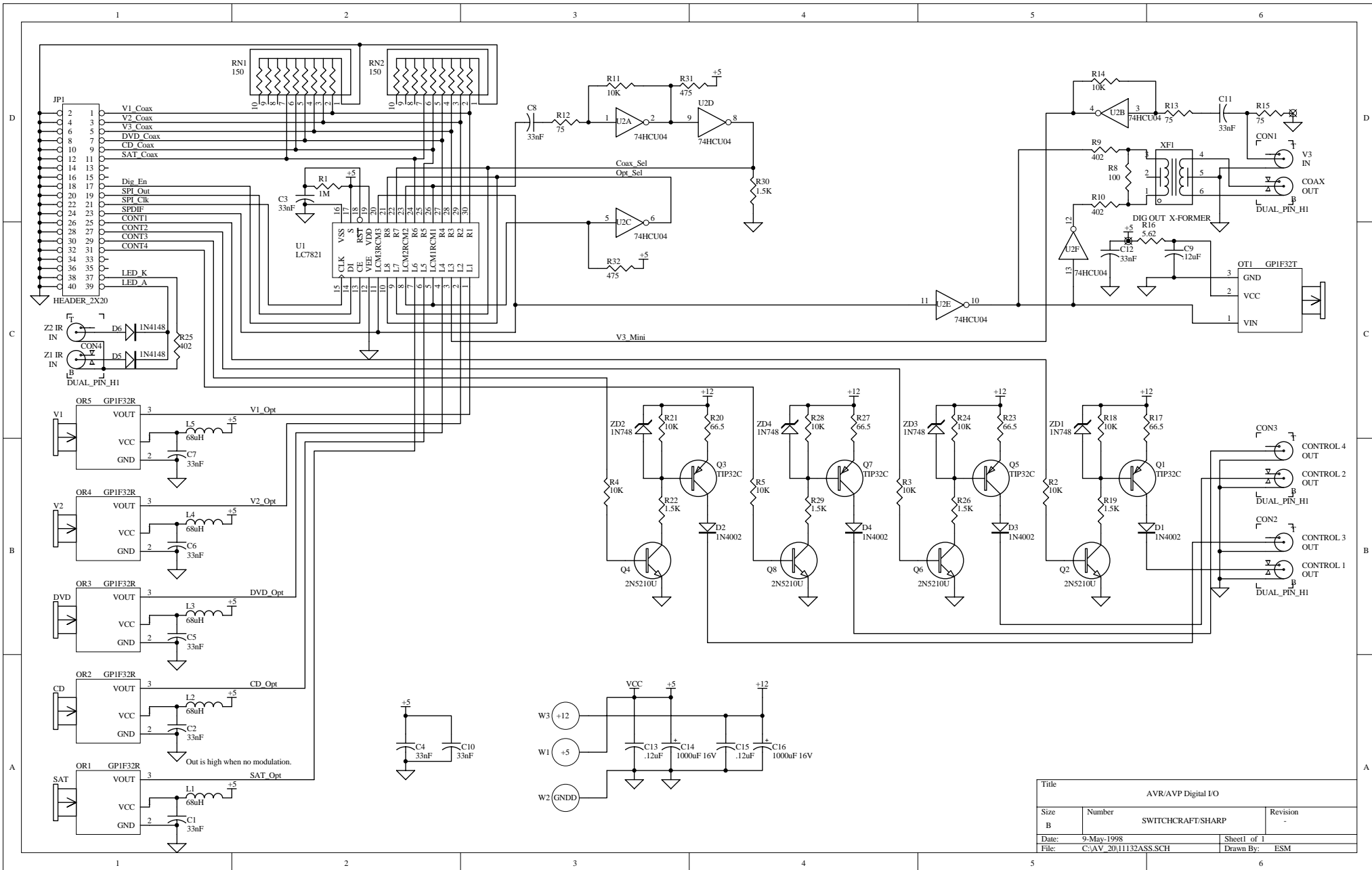
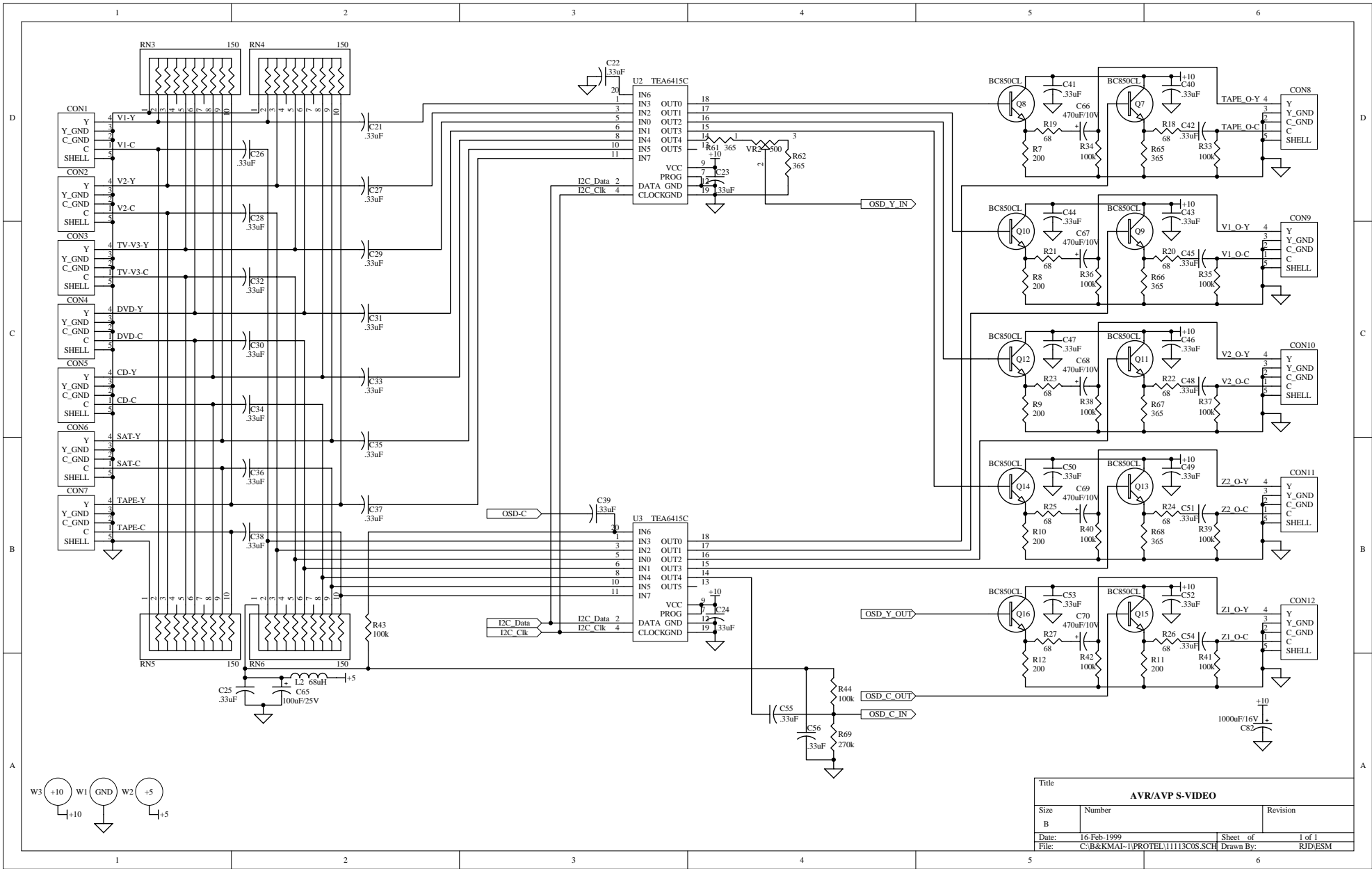


Title			AVR/AVP DISPLAY BOARD		
Size	Number	Revision			
B					
Date:	16-Feb-1999	Sheet 1 of 1			
File:	C:\B&KMAI-1\PROTEL\10954D00.SCH	Drawn By:		ESM/THK	

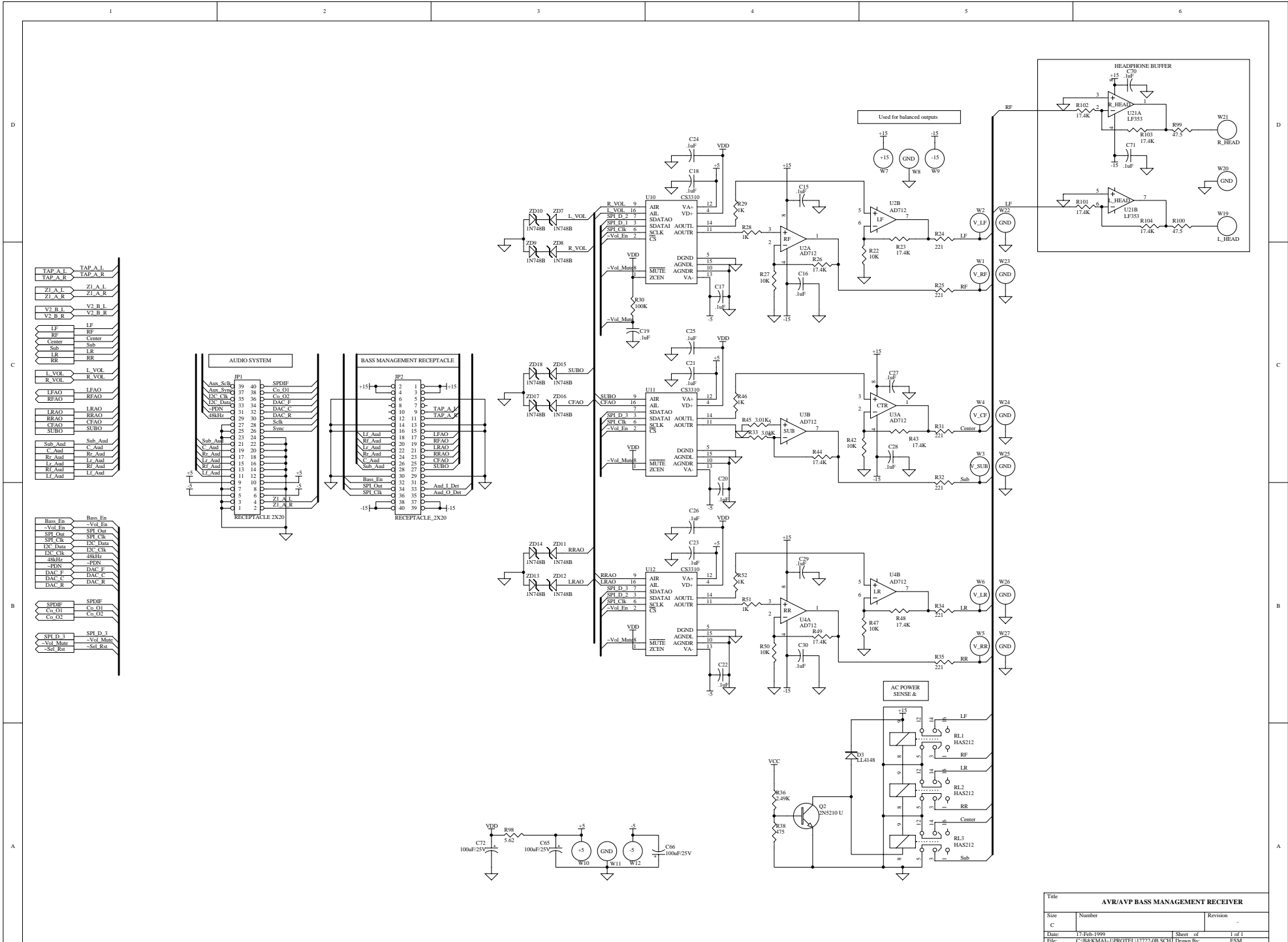




Title			
AVR/AVP Digital I/O			
Size	Number	Revision	
B	SWITCHCRAFT/SHARP	-	
Date:	9-May-1998	Sheet 1 of 1	
File:	C:\AV_2011132ASS.SCH	Drawn By:	ESM

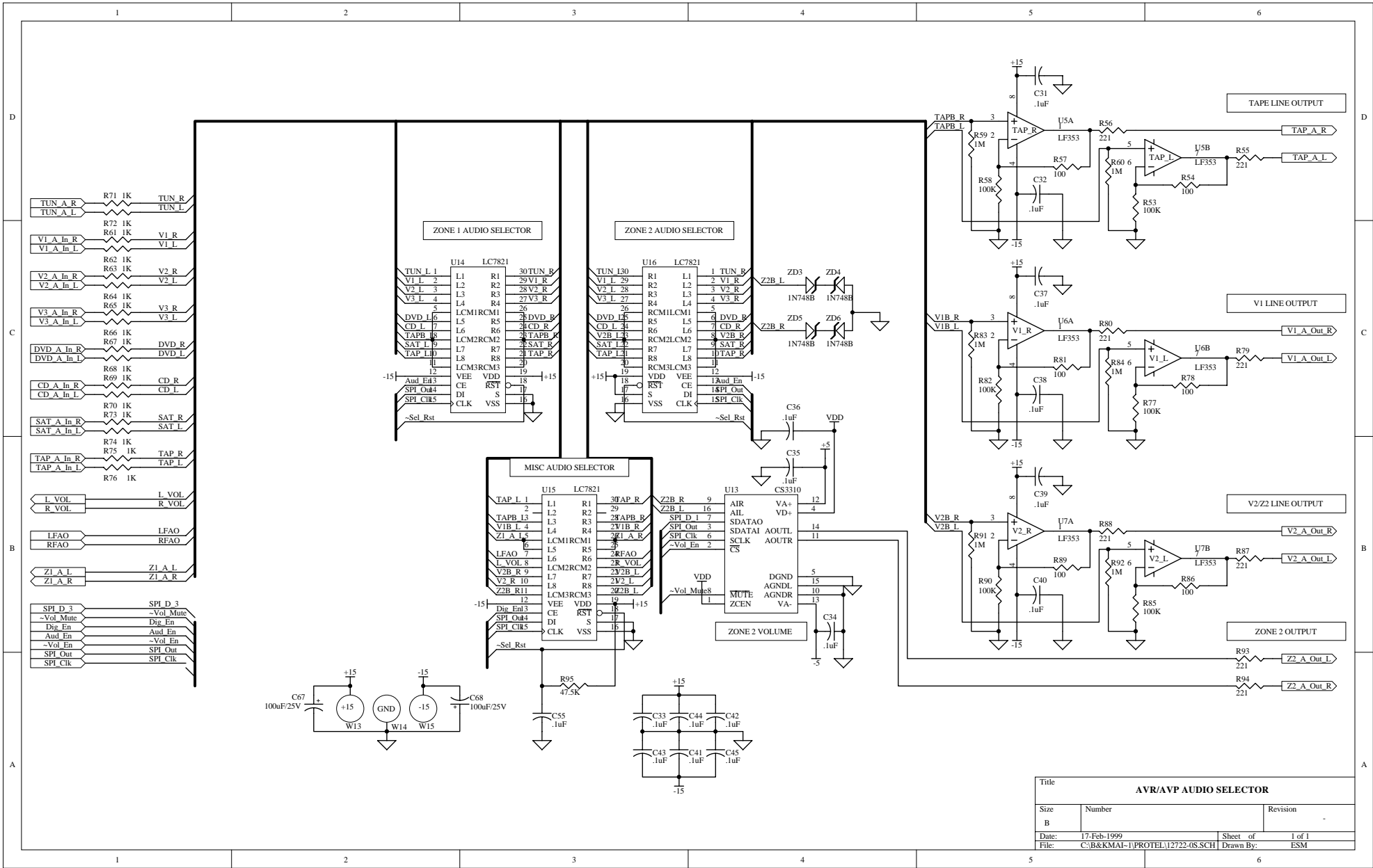


Title		
<b>AVR/AVP S-VIDEO</b>		
Size	Number	Revision
B		
Date:	16-Feb-1999	Sheet of 1 of 1
File:	C:\B&KMAI-1\PROTEL\11113COS.SCH	Drawn By: RJD/ESM

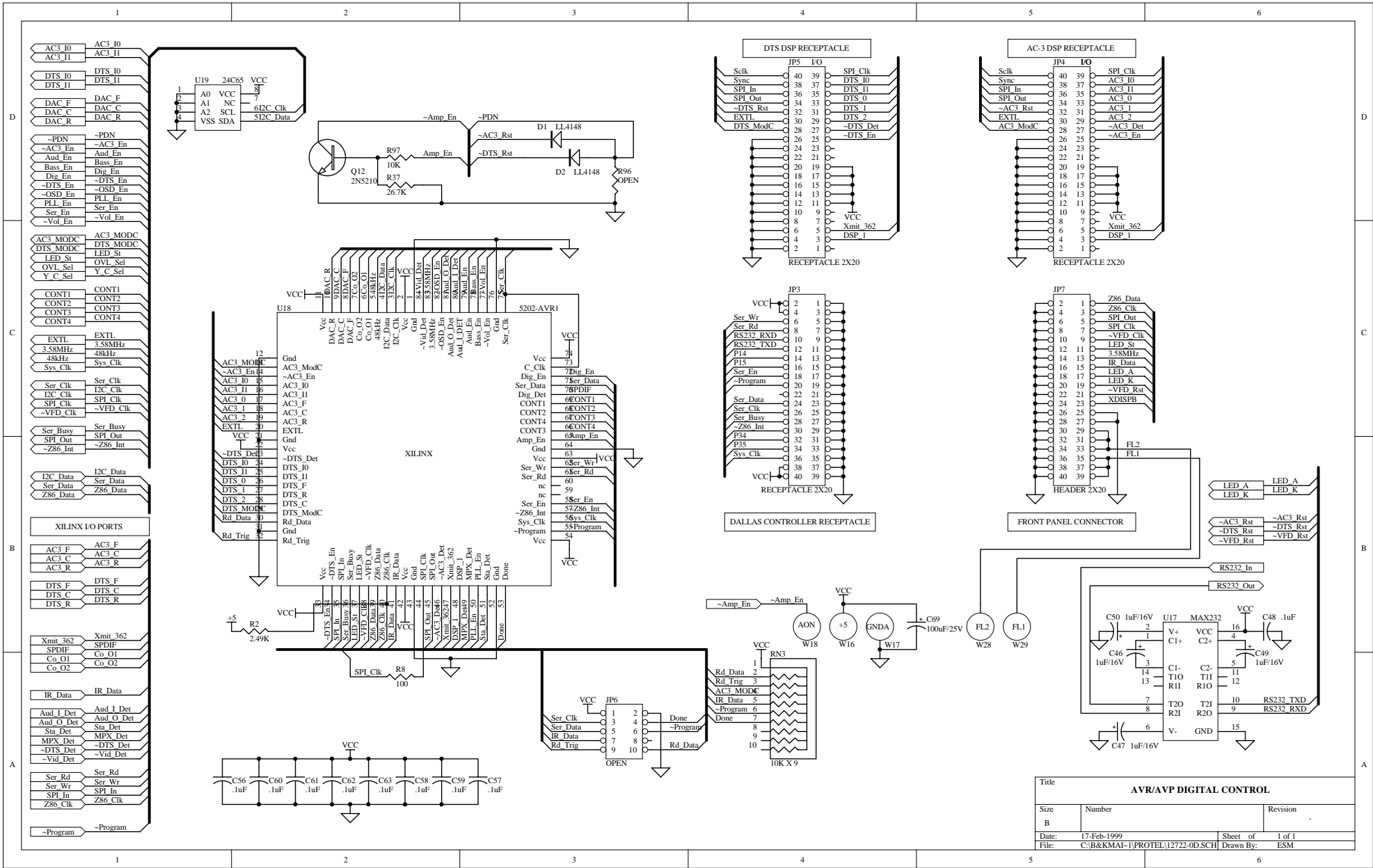


Title		
AVR/AVP BASS MANAGEMENT RECEIVER		
Size	Number	Revision
C		
Date:	17.Feb.1999	Sheet of 1 of 1
File:	C:\B&K\MAI-1\PROTEL\127222-0B.SCH	Drawn By: ESM

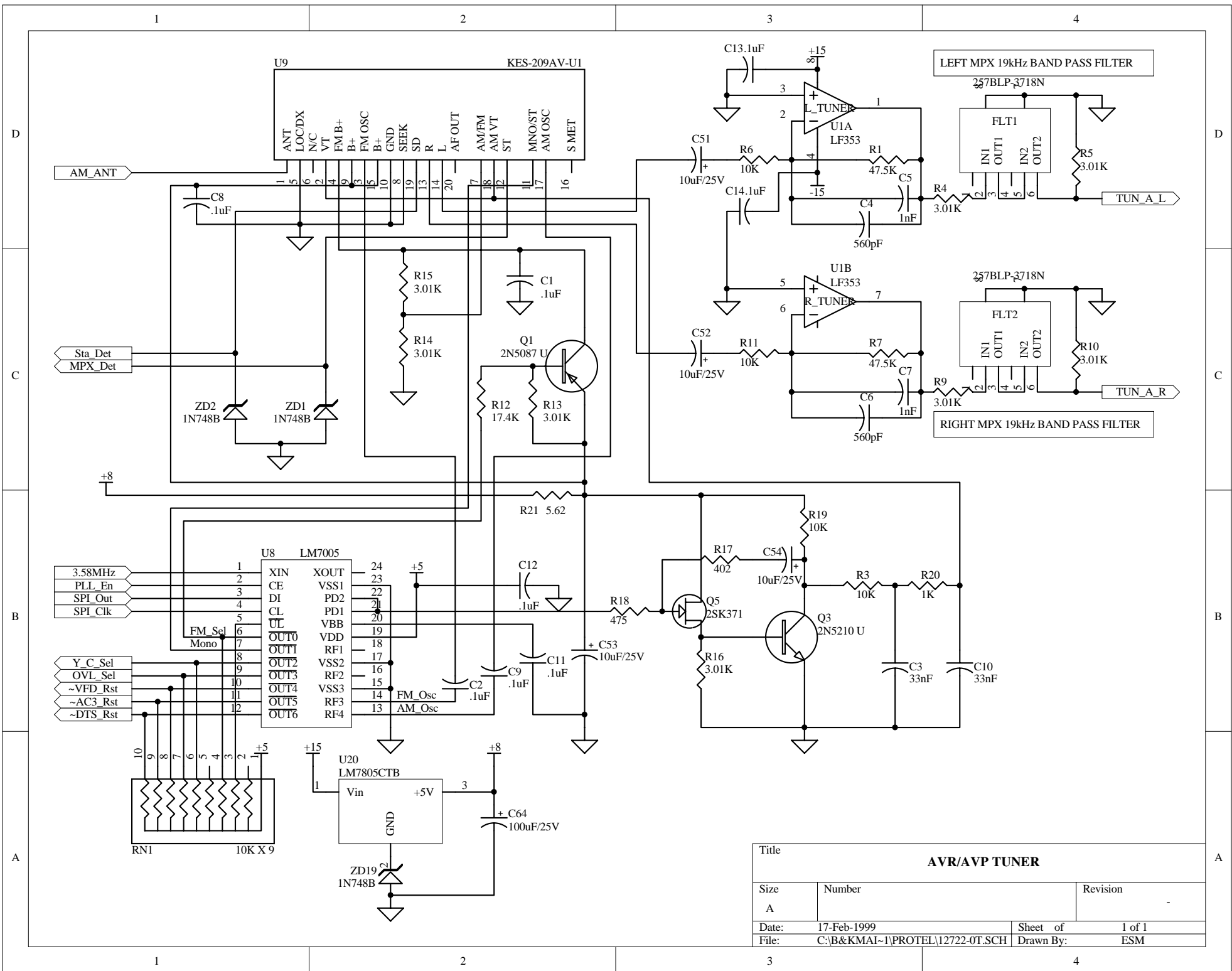




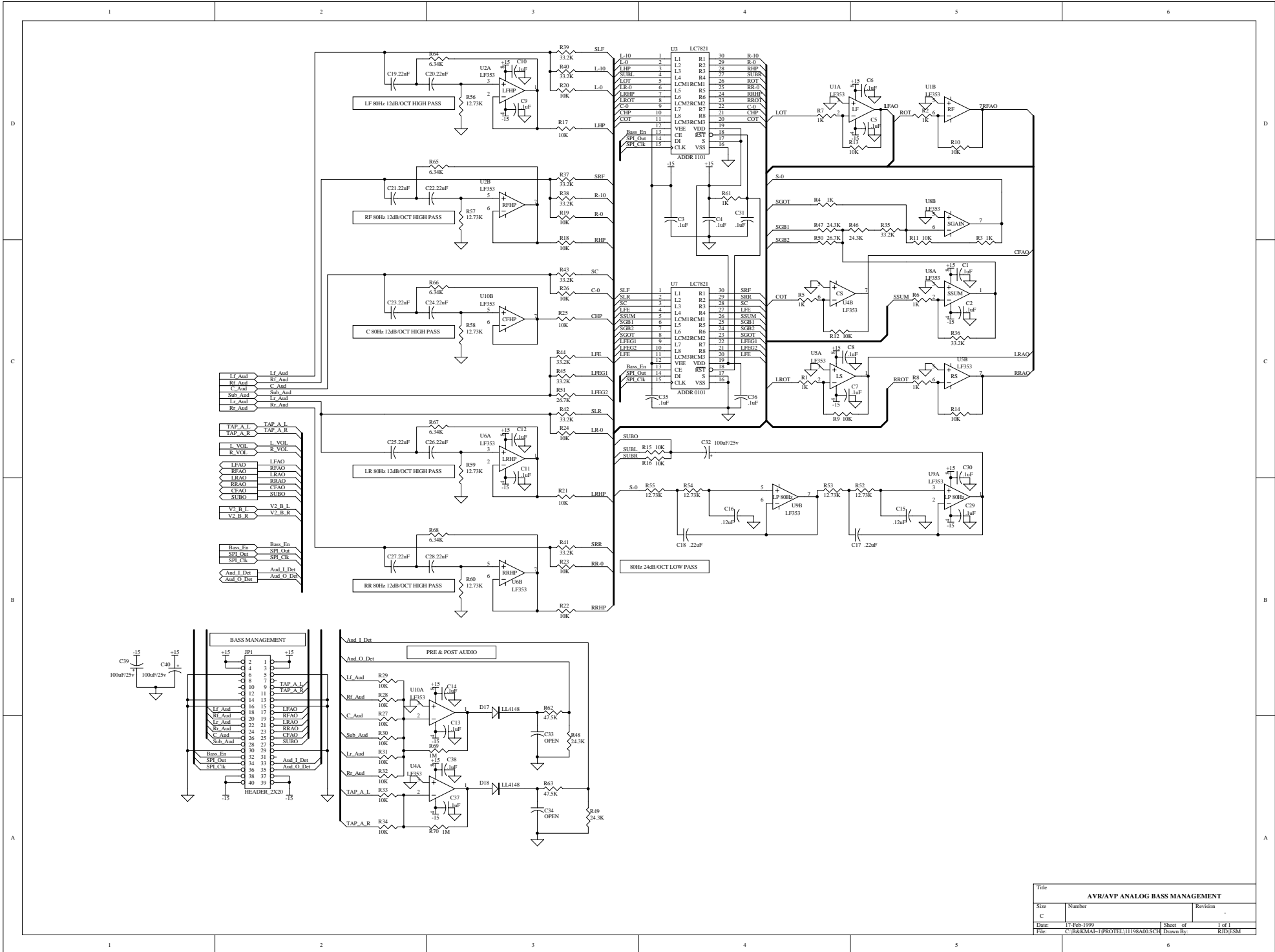
Title		
<b>AVR/AVP AUDIO SELECTOR</b>		
Size	Number	Revision
B		
Date:	17-Feb-1999	Sheet of 1 of 1
File:	C:\B&KMAI-1\PROTEL1\2722-08.SCH	Drawn By: ESM



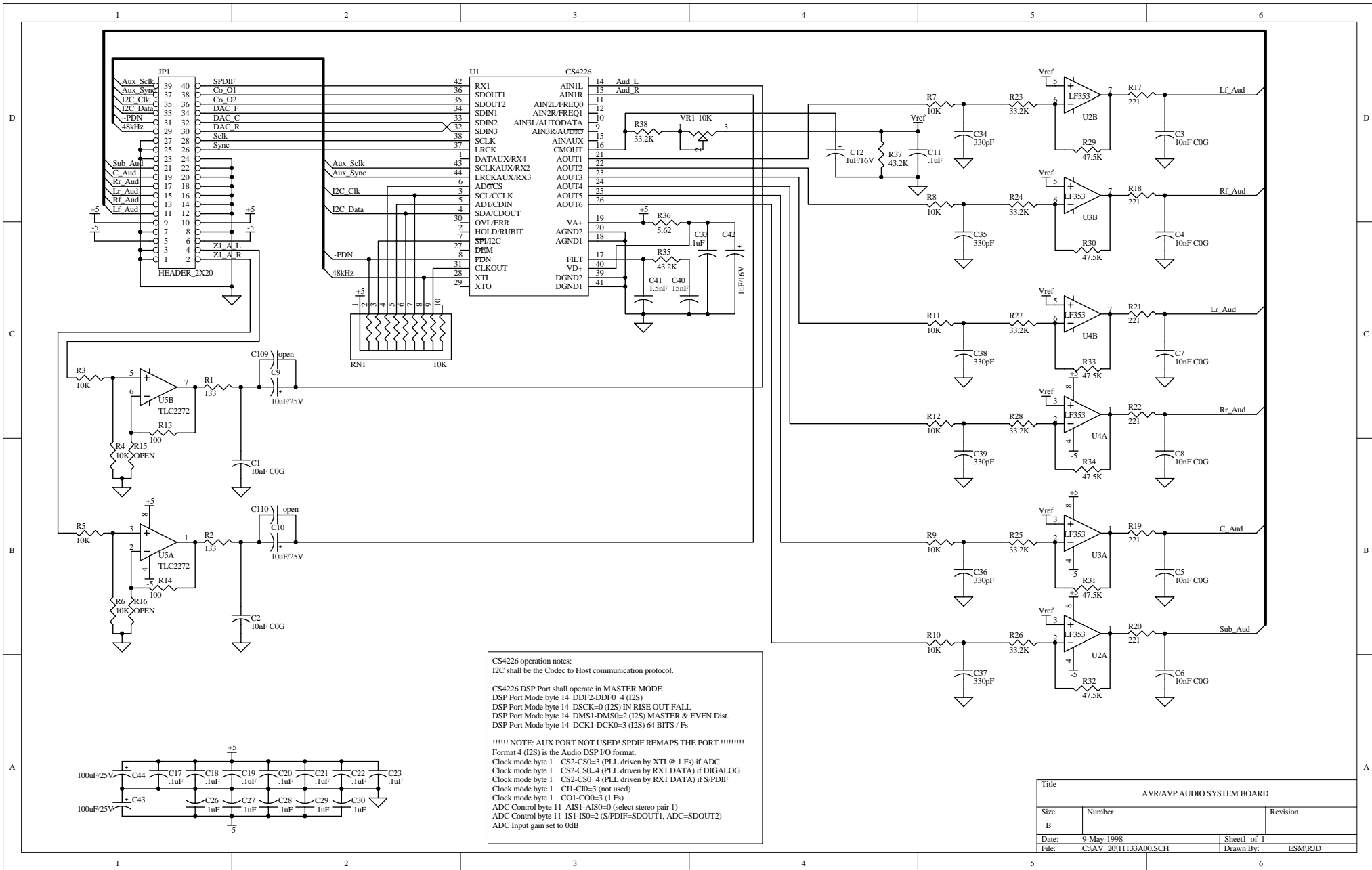
Title		
<b>AVR/AVP DIGITAL CONTROL</b>		
Size	Number	Revision
B		
Date:	17-Feb-1999	Sheet of 1 of 1
File:	C:\B&KMAI-1\PROTEL1\2722-0D\SCH	Drawn By: ESM



Title			
<b>AVR/AVP TUNER</b>			
Size	Number	Revision	
A		-	
Date:	17-Feb-1999	Sheet of	1 of 1
File:	C:\B&KMAI~1\PROTEL\12722-0T.SCH	Drawn By:	ESM

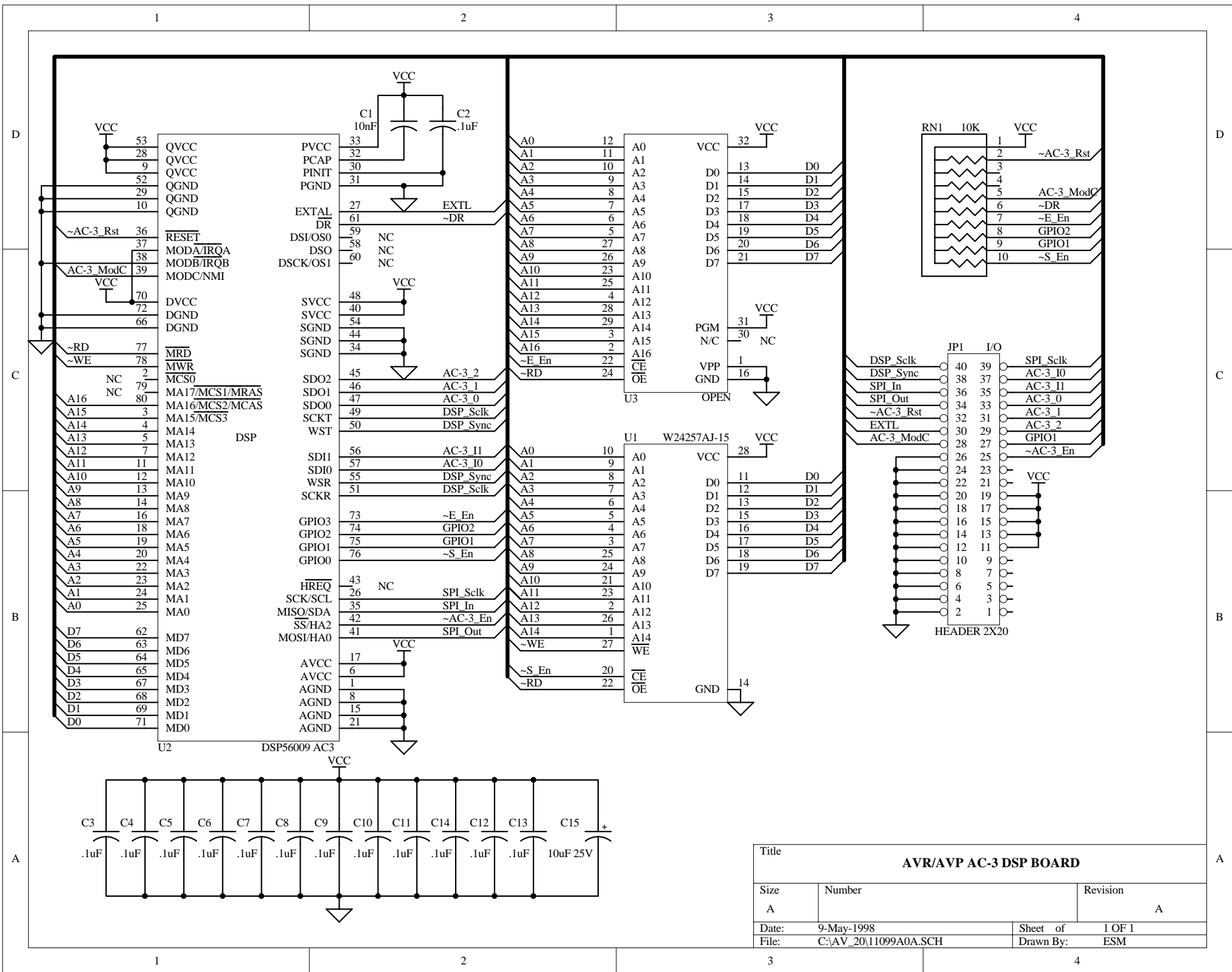


Title		
AVR/AVP ANALOG BASS MANAGEMENT		
Size	Number	Revision
C		
Date:	17-Feb-1999	Sheet of 1 of 1
File:	C:\BARKMAI-1\PROTEL11198A00\SCH	Drawn By: RJD/ESM

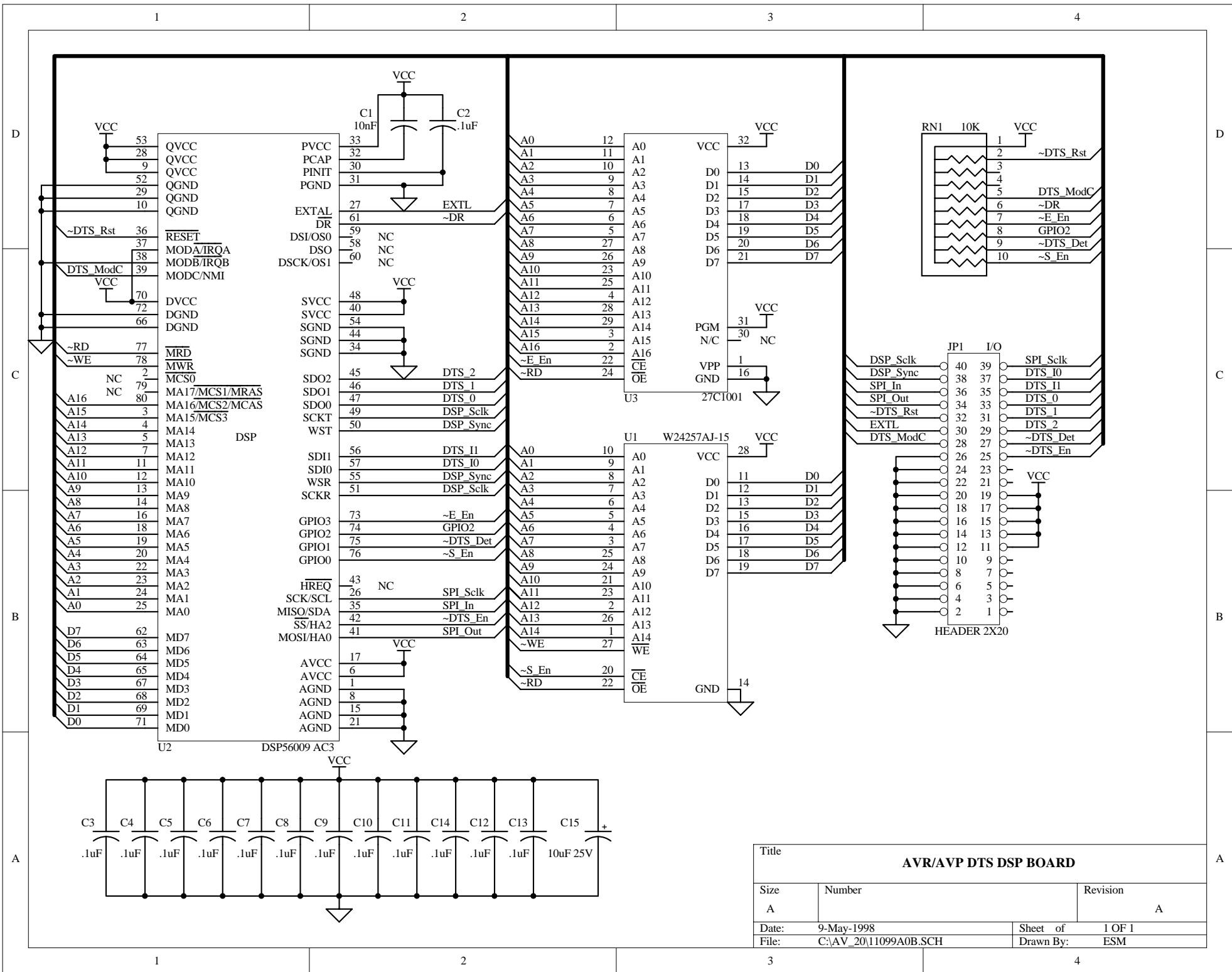


CS4226 operation notes:  
 I2C shall be the Codec to Host communication protocol.  
 CS4226 DSP Port shall operate in MASTER MODE.  
 DSP Port Mode byte 14 DDF2-DDF0=4 (I2S)  
 DSP Port Mode byte 14 DSCK=0 (I2S) IN RISE OUT FALL  
 DSP Port Mode byte 14 DMS1-DMS0=2 (I2S) MASTER & EVEN Dist.  
 DSP Port Mode byte 14 DCK1-DCK0=3 (I2S) 64 BITS / Fs  
 !!!!! NOTE: AUX PORT NOT USED! SPDIF REMAPS THE PORT !!!!!  
 Format 4 (I2S) is the Audio DSP I/O format.  
 Clock mode byte 1 CS2-CS0=3 (PLL driven by XTI @ 1 Fs) if ADC  
 Clock mode byte 1 CS2-CS0=4 (PLL driven by RX1 DATA) if DIGALOG  
 Clock mode byte 1 CS2-CS0=3 (PLL driven by RX1 DATA) if S/PDIF  
 Clock mode byte 1 C11-C10=3 (not used)  
 Clock mode byte 1 CO1-CO0=3 (1 Fs)  
 ADC Control byte 11 AIS1-AIS0=0 (select stereo pair 1)  
 ADC Control byte 11 IS1-IS0=2 (S/PDIF=SDOUT1, ADC=SDOUT2)  
 ADC Input gain set to 0dB

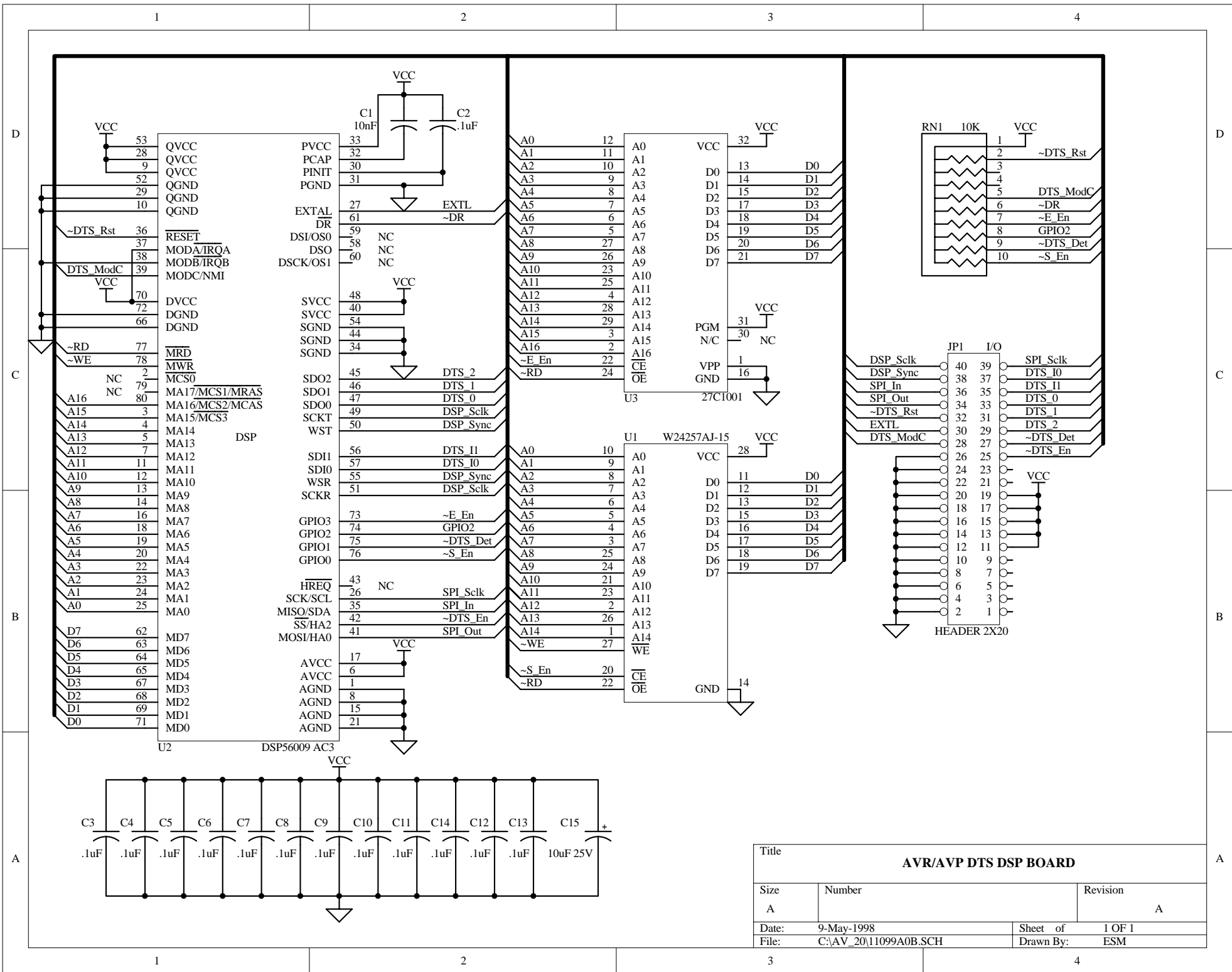
Title		
AVR/AVP AUDIO SYSTEM BOARD		
Size	Number	Revision
B		
Date:	9-May-1998	Sheet 1 of 1
File:	C:\AV 2011133A00.SCH	Drawn By: ESM/RJD



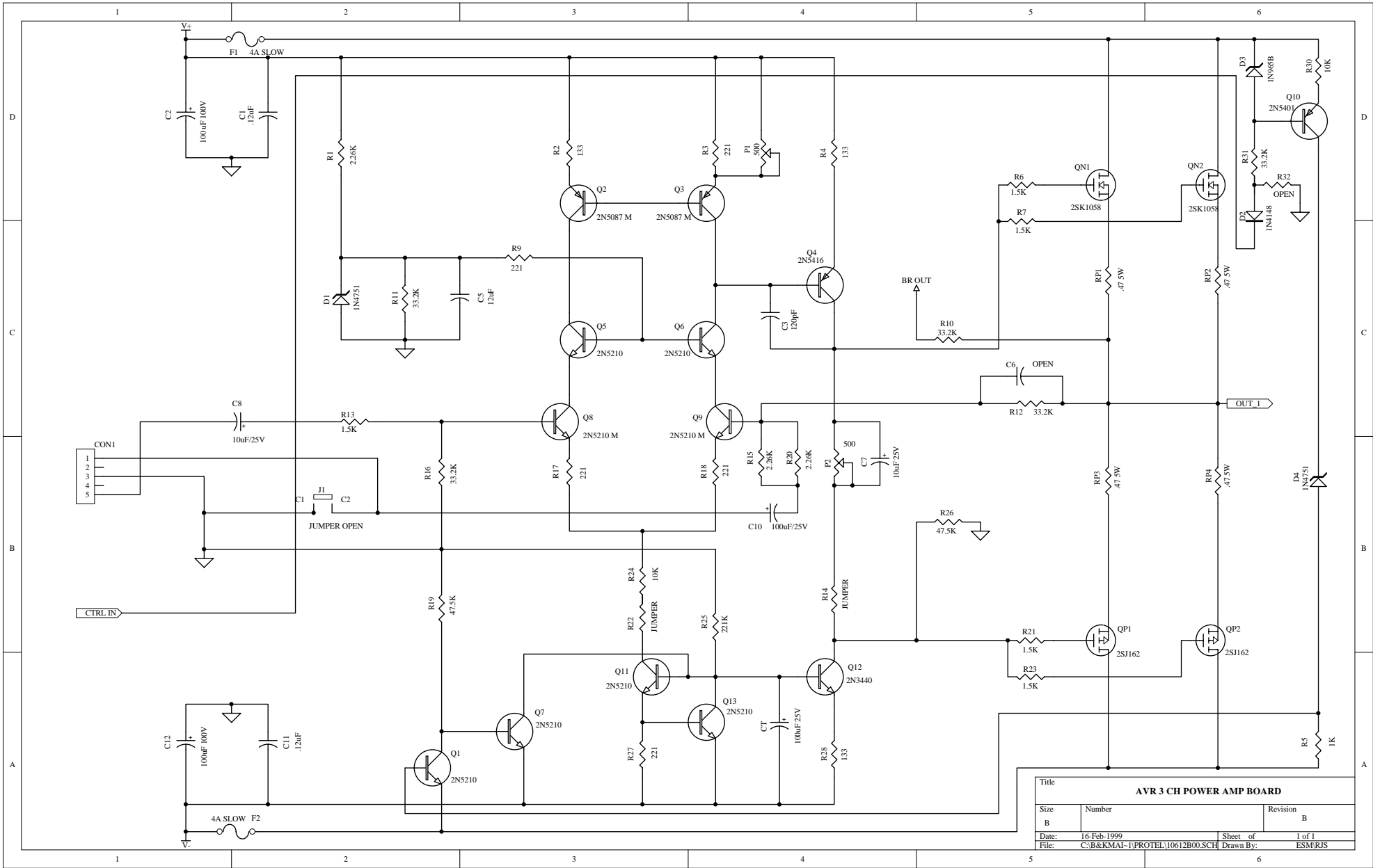
Title			
<b>AVR/AVP AC-3 DSP BOARD</b>			
Size	Number	Revision	
A		A	
Date:	9-May-1998	Sheet of	1 OF 1
File:	C:\AV_20\11099A0A.SCH	Drawn By:	ESM



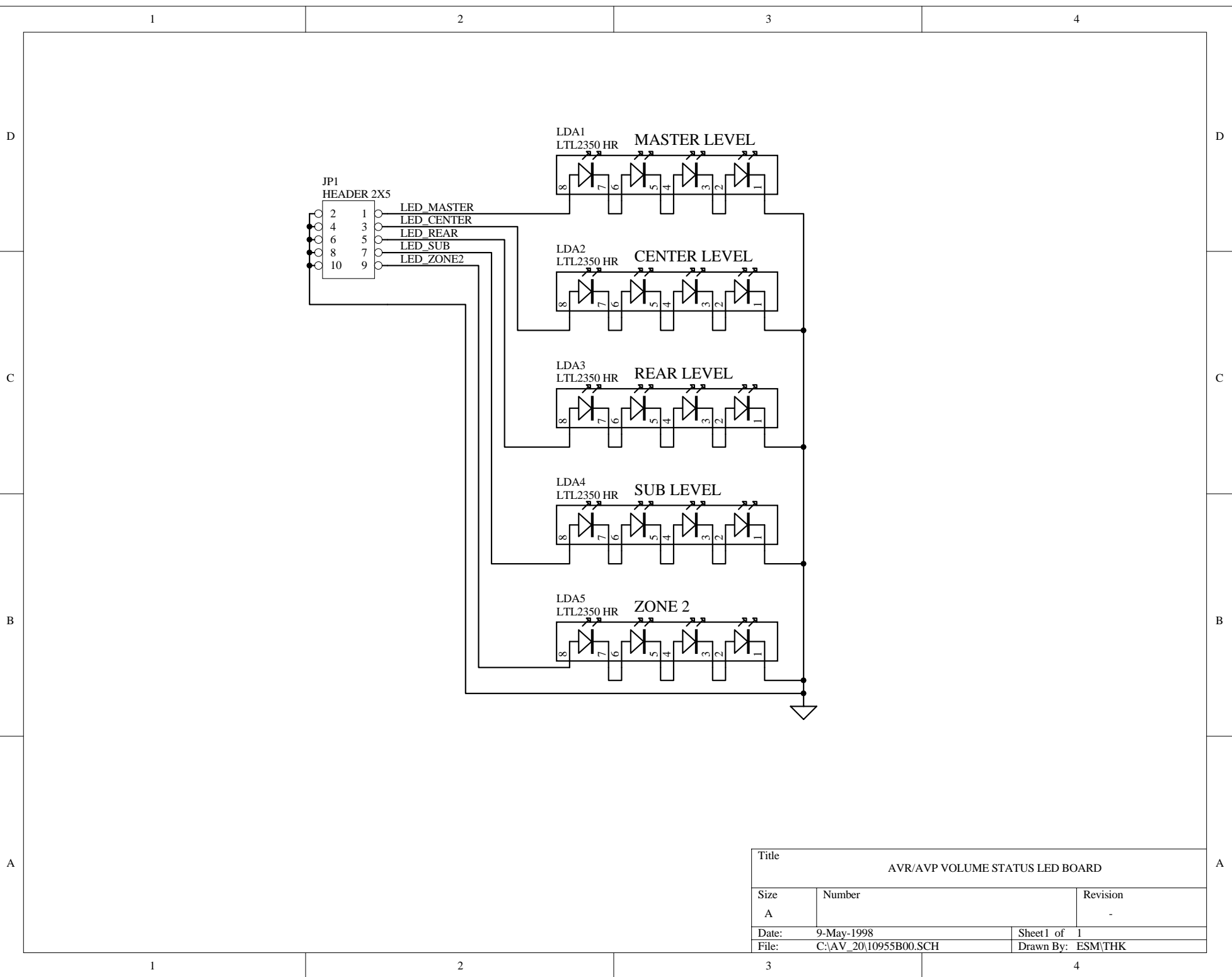
Title			
<b>AVR/AVP DTS DSP BOARD</b>			
Size	Number	Revision	
A		A	
Date:	9-May-1998	Sheet of	1 OF 1
File:	C:\AV_20\11099A0B.SCH	Drawn By:	ESM



Title			
<b>AVR/AVP DTS DSP BOARD</b>			
Size	Number	Revision	
A		A	
Date:	9-May-1998	Sheet of	1 OF 1
File:	C:\AV_20\11099A0B.SCH	Drawn By:	ESM

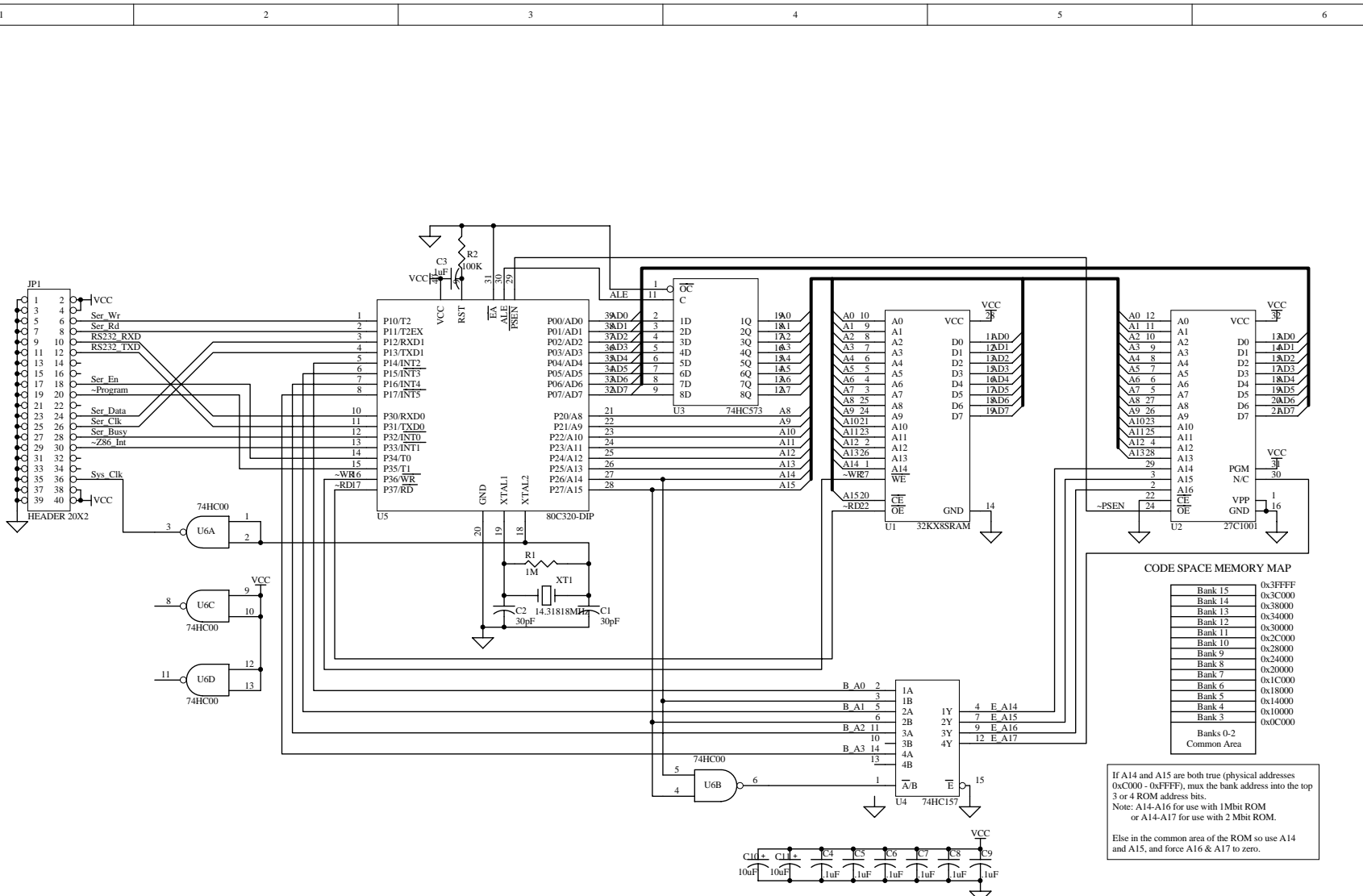


Title		
<b>AVR 3 CH POWER AMP BOARD</b>		
Size	Number	Revision
B		B
Date:	16-Feb-1999	Sheet of 1 of 1
File:	C:\B&KMAI-1\PROTEL10612B00.SCH	Drawn By: ESM/RJS



Title		
AVR/AVP VOLUME STATUS LED BOARD		
Size	Number	Revision
A		-
Date:	9-May-1998	Sheet 1 of 1
File:	C:\AV_20\10955B00.SCH	Drawn By: ESM\THK





**CODE SPACE MEMORY MAP**

Bank 15	0x3FFFF
Bank 14	0x3C000
Bank 13	0x34000
Bank 12	0x30000
Bank 11	0x2C000
Bank 10	0x28000
Bank 9	0x24000
Bank 8	0x20000
Bank 7	0x1C000
Bank 6	0x18000
Bank 5	0x14000
Bank 4	0x10000
Bank 3	0x0C000
Banks 0-2	Common Area

If A14 and A15 are both true (physical addresses 0xC000 - 0xFFFF), mux the bank address into the top 3 or 4 ROM address bits.  
 Note: A14-A16 for use with 1Mbit ROM or A14-A17 for use with 2 Mbit ROM.  
 Else in the common area of the ROM so use A14 and A15, and force A16 & A17 to zero.

Title		
<b>AVR/AVP CONTROLLER BOARD with RS-232</b>		
Size	Number	Revision
B		
Date:	16-Feb-1999	Sheet of 1 of 1
File:	C:\B&KMAI-1\PROTEL1\1095L00.SCH	Drawn By: RJ/ESM

1

2

3

4

5

6

1

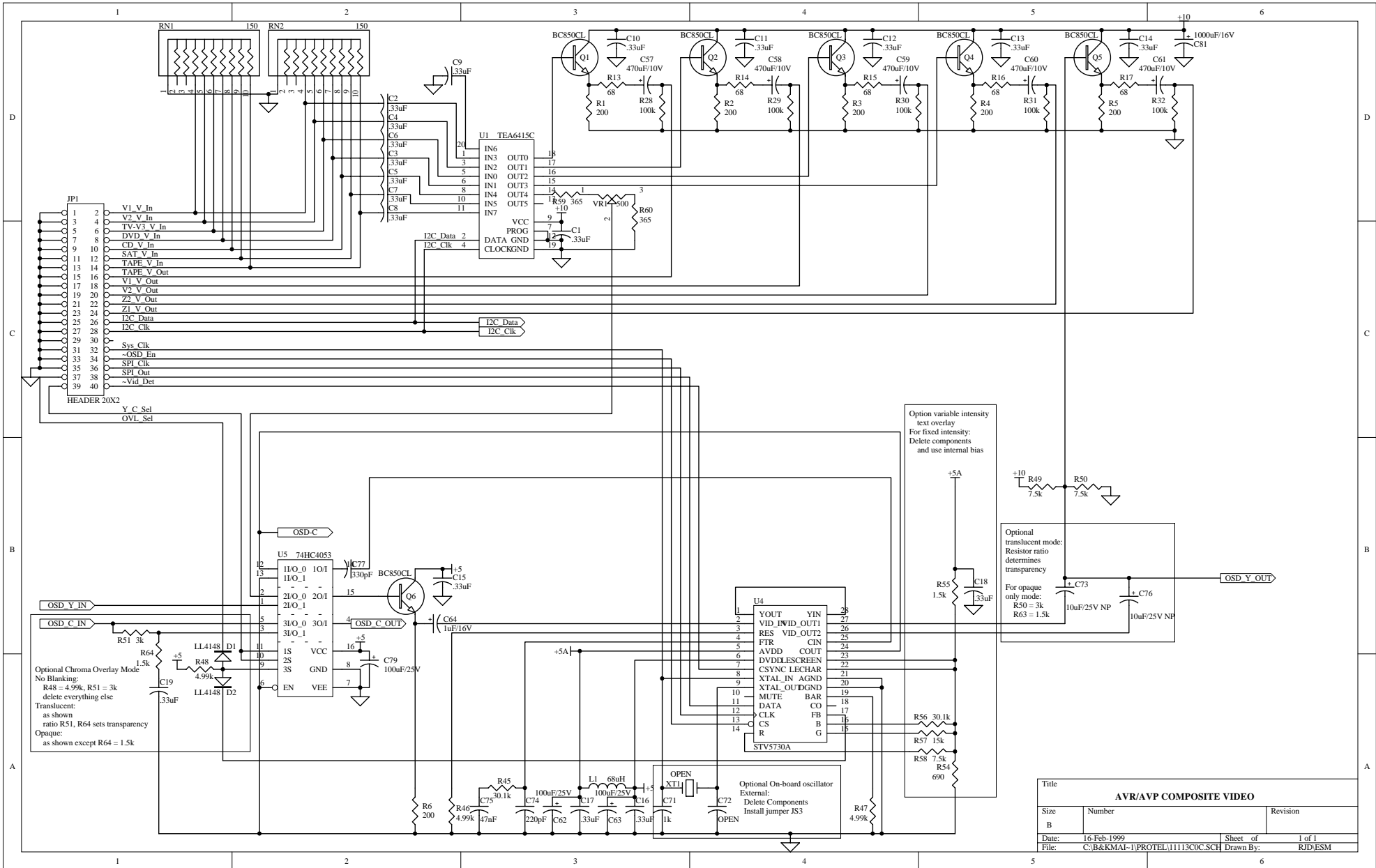
2

3

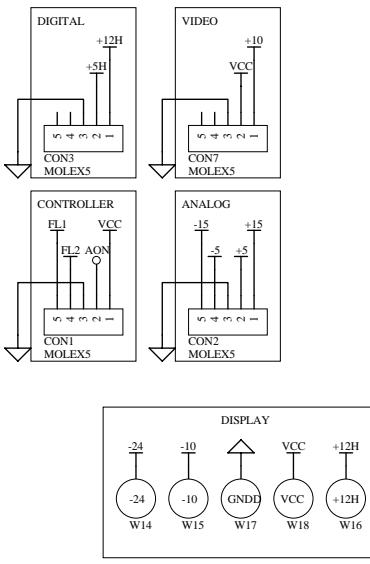
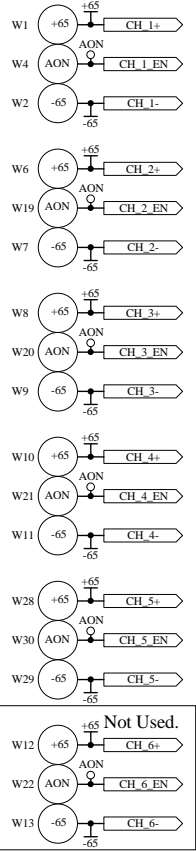
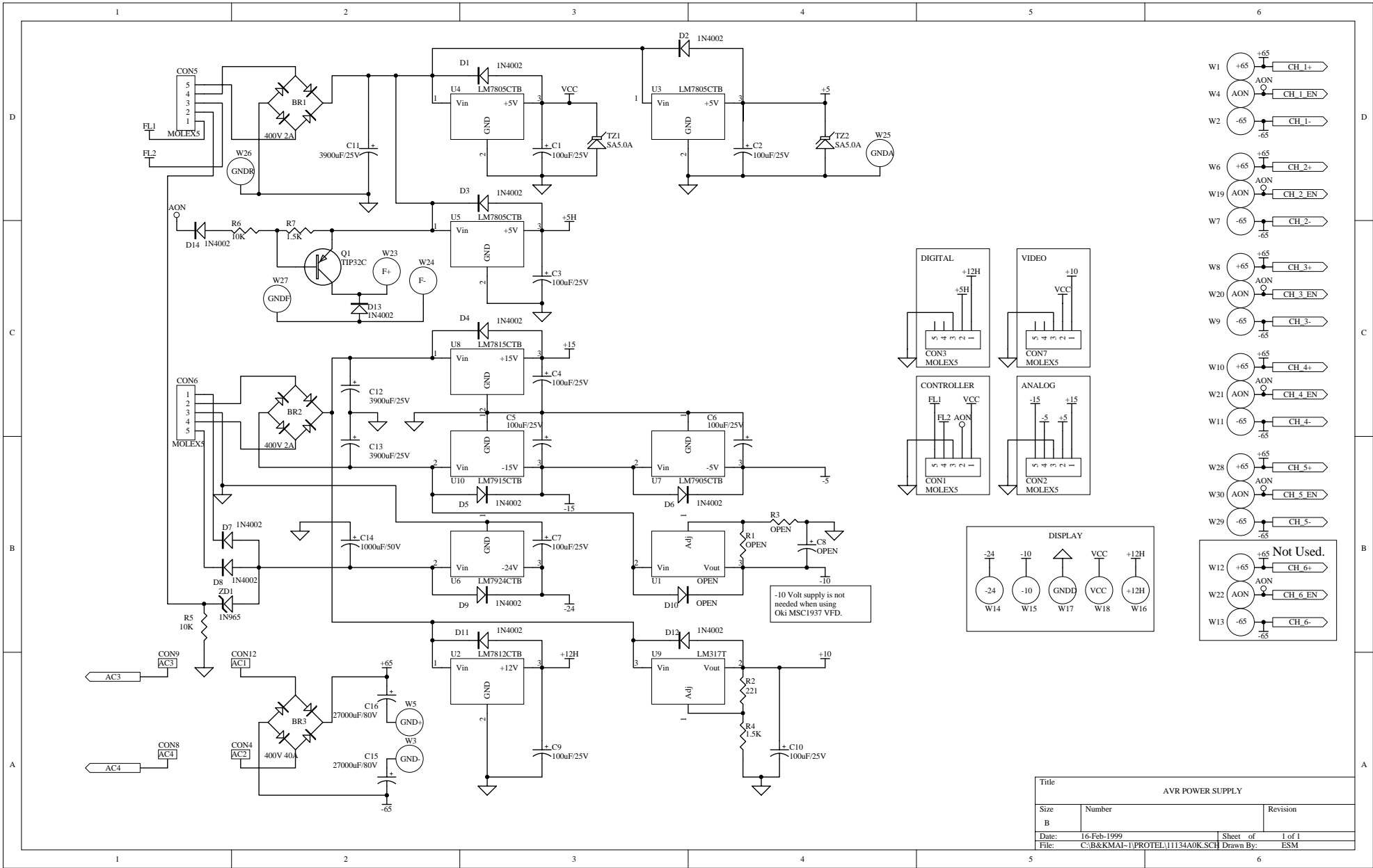
4

5

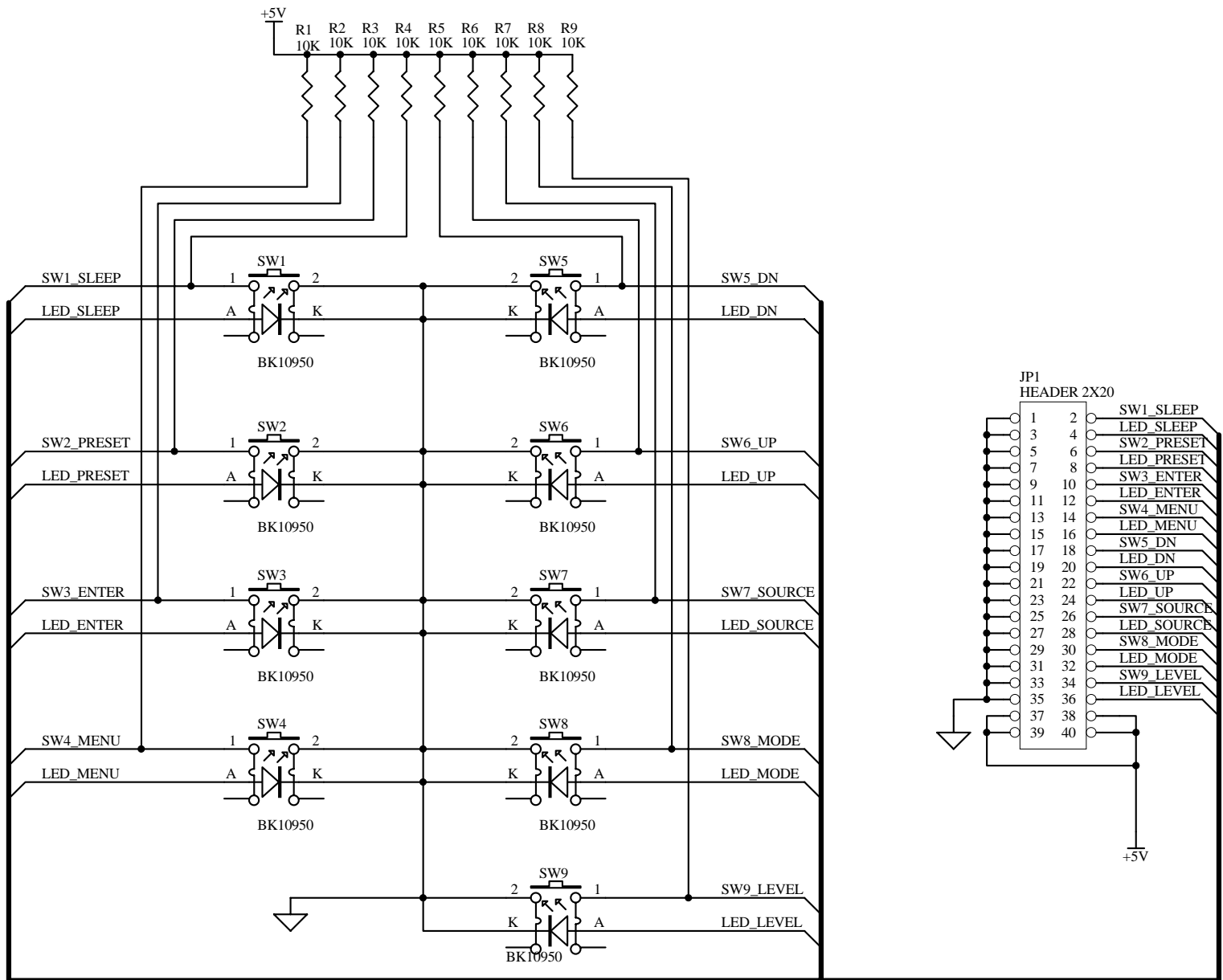
6



Title		
<b>AVR/AVP COMPOSITE VIDEO</b>		
Size	Number	Revision
B		
Date:	16-Feb-1999	Sheet of 1 of 1
File:	C:\B&KMAI-1\PROTEL\11113COC.SCH	Drawn By: RJD,ESM



Title		
AVR POWER SUPPLY		
Size	Number	Revision
B		
Date:	16-Feb-1999	Sheet of 1 of 1
File:	C:\B&KMAI-1\PROTEL\11134A0K.SCH	Drawn By: ESM



Title			AVR/AVP SWITCH BOARD		
Size	Number			Revision	-
A					
Date:	9-May-1998	Sheet 1 of 1			
File:	C:\AV_20\10953B00.SCH	Drawn By:	ESM\THK		

1

2

3

4

D

D

C

C

B

B

A

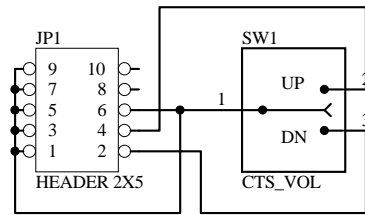
A

1

2

3

4



NOTE:  
 ODD/EVEN NOT SWAPPED  
 JP1 MTD ON TOP

Title		
AVR/AVP MDM VOLUME BOARD BOARD		
Size	Number	Revision
A		-
Date:	9-May-1998	Sheet 1 of 1
File:	C:\AV_20\11135-00.SCH	Drawn By: ESM\THK