



SR10.1 Remote Getting Started



Installing the SR10.1 Editor

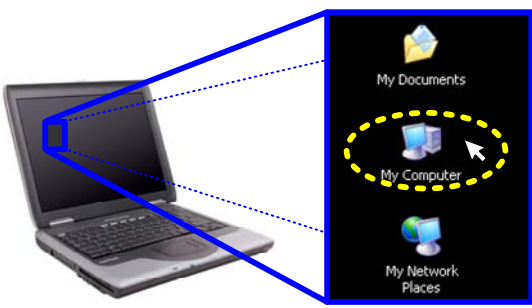
Step 1 Remove the SR10.1 CD-ROM from the Packaging



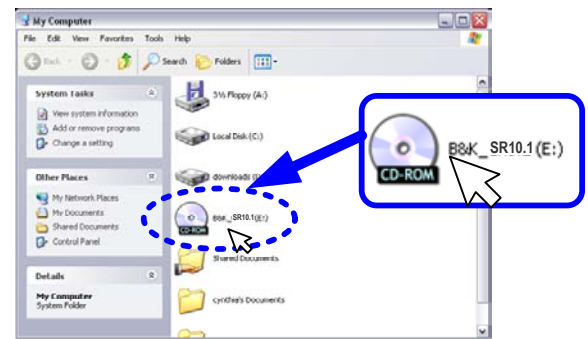
Step 2 Turn on the PC and Put the CD-ROM into the CD Drive



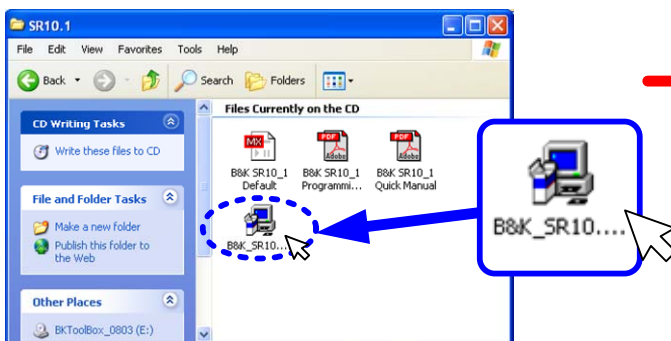
Step 3 Locate and Double Click on "My Computer" Icon from the PC Desktop



Step 4 Locate and Double Click on the CD-ROM Icon Labeled "B&K_SR10.1"



Step 5 Locate and Double Click on "B&K_SR10.1_Setup_1_09_168.exe" and Follow through the Installation Wizard



Installation Wizard

