


Instructions for CK1.2 Editor version 1.12.203 **Allows conversion of SR10.1 mxf remote file to CK1.2 mxf keypad file**

1. If you have CK1.2 Editor installed on your computer please perform a Live Update  to receive this new feature (version 1.12.203) and proceed to Step 5 below.
2. If you do not have CK1.2 Editor already installed, open (double-click) the file called **B&K_CK1_2_Setup_1_12_203.exe**
3. This will begin to install the CK1.2 Editor Software
4. After installation open up the new CK1.2 Editor Program

To convert a SR10.1 MXF remote controller file to a CK1.2 keypad file:

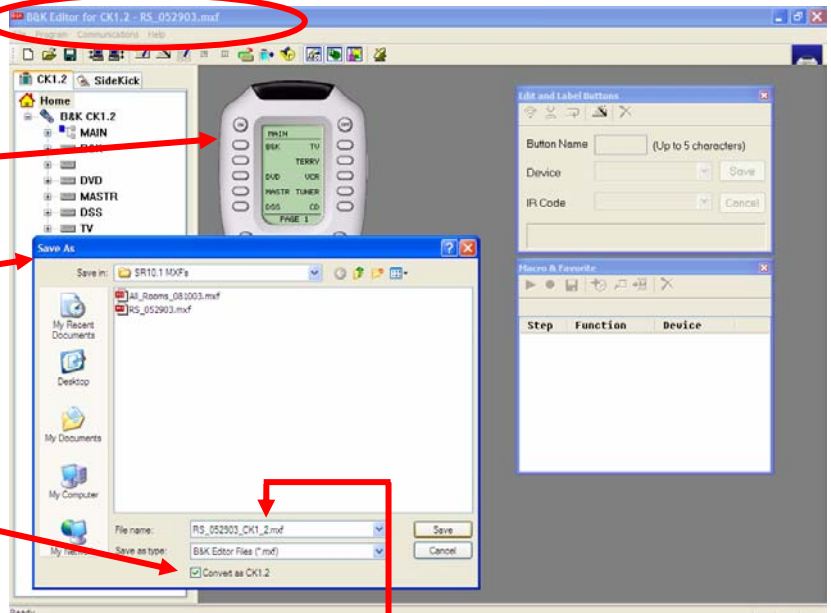
5. Select **FILE>OPEN** and choose a **SR10.1** remote file you would like to convert to a CK1.2 keypad file.
6. Click on **OPEN** to open the SR10.1 remote file you chose.
7. A SR10.1 remote graphic will now replace the CK1.2 graphic (see picture below)
8. Now go to **FILE>SAVE AS** and you will see the following windows

Notice how you're in CK1.2 Editor and the SR10.1 file you loaded is listed at the top. Also, you'll see a SR10.1 remote graphic in place of the CK1.2 graphic.

SAVE AS window


The new **Convert to CK1.2** feature is located at the bottom of this window.

To convert the SR10.1 remote file to a CK1.2 file make sure the checkbox **"Convert to CK1.2"** is checked.



Note: before clicking **SAVE**, make sure you rename the file otherwise you will overwrite your SR10.1 remote controller MXF file.

(ex. SR10.1 filename is **"Jones_SR10_1.mxf"** rename to **"Jones_CK1_2.mxf"**)

9. Click **SAVE**
10. The SR10.1 remote controller graphic will now turn back into a CK1.2 keypad graphic
11. Your SR10.1 remote layout has now been re-laid out as a CK1.2 keypad layout
12. Finally, perform a Full Download  into your CK1.2 keypad.

060804